



Fitting Instruction

Article-No. : **110H047 & 110H047T**
Product : **Rear Set**
Manufacturer : **Honda**
Model : **CBR 900RR '92 - '93**

Important:

Read this instruction manual carefully and mind all warnings and tips. You should do this work only if you're qualified; otherwise we recommend this mounting to be done by a qualified workshop. Improperly mounting of this kit can reduce the driveability of the motorcycle and may be a risk to your health and life.

Special works are marked with the following signs. Please take special care on these works.



Warning! Important mounting instruction. It shows risks to your life and health.



Tips for mounting and maintenance or to avoid damage.

Fitting:

Remove stock rear sets. The following parts will be used for your new rear set: brake-lever spring, left heel-protector, brake-light switch with spring and the screws that fix the stay.



Rear sets are premount but all screws are not tightened! Always use locknuts or proper amount of medium thread-locking adhesive (i.e. Loctite 243). The details of assembling are shown on the backside drawing. All parts are welded into their bags as they belong together. You should use the attached grease to mount lever bearing on peg adapter.

The tightening torques for connections to the frame refers to the manufacturers' instructions. Use the following torques for all the other screwing:

M5	=	5 - 6Nm
M6	=	9 - 10Nm
M8	=	18 - 22Nm
M10	=	30 - 35Nm



After installing your new rear set **test brake and gear shifting at low speed. If anything is not operating properly or braking efficiency is poor, testing at high speeds may result in death or serious injury!**

Maintenance:



Periodically proof all functions during service intervals. Use **particle free (no MoS₂)** Lithium- or Barium-grease on soap base to maintain lever bushings.

Attach brake cylinder to the outside with screws M6 x 20

Mount brake cylinder adapter from the outside with M6 x 25 and attach holder for the brake-light switch with self-locking nut M6 to the inside

Mount fork and pin of the push rod with new split pin

Mount brake lever as shown in separat drawing for peg adaptation

Brake Lever

Screw in M6 x 16 from outside and attach sping-holding bolt to the inside

Brake cylinder adaptor

Brake cylinder adapter mounted from the outside with M6 x 16

Stay

Mount stay with original screws

Fix original brake-lever spring with screw M6 x 25 and counternut M6

Fix brake lever knob with countersunk M6 x16

Mount stay with original screws

Stay

Gearshift lever

Mount stay with original screws

Fix gearshift lever knob with countersunk M6 x16

Fix small gearshift lever with M6 x18, an angle of 90° between lever and connection rod is recommended

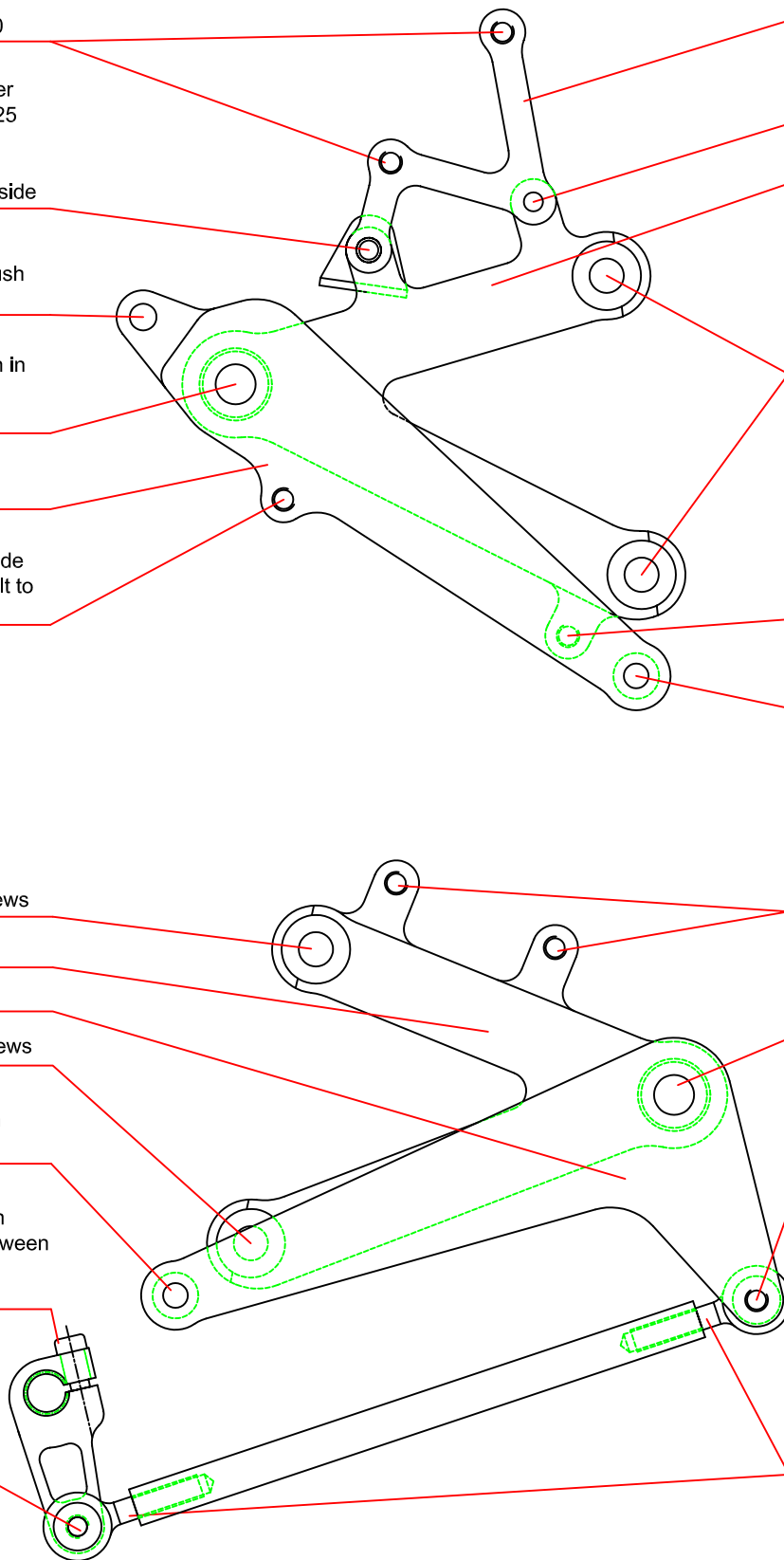
Attach ball joint with M6 x 18 to the gearshift levers outside

Attach the original heel protector with M6 x 20 and bushings (t=10mm) to the outside of stay

Mount gearshift lever as shown in separat drawing for peg adaptation

Attach the gearshift rod with M6 x 16 to the inside of gearshift lever

Adjust lever position and fix connection rod with counternuts M6/M6 left-handed



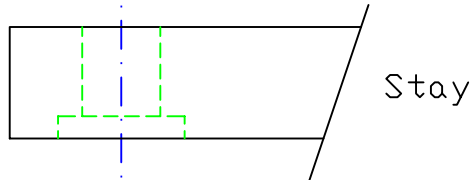
Schrauben-
sicherung
mittelfest
z.B.: Loctite 243

medium thread
locking adhesive
f.e. loctite 243

ULS M10x1.25x25

ULS M10x1.25x25

Grundplatte



Paßscheibe verwenden,
falls Hebel nicht
beweglich

If lever is blocked use
shim ring

Scheibe $\varnothing 25\text{mm}$

Washer $\varnothing 25\text{mm}$

Brems/ Schalthebel

Brake pedal/ Shifter

Scheibe $\varnothing 25\text{mm}$

Washer $\varnothing 25\text{mm}$

Fett

Grease

Klappbare/
starre Lagerung

Adaptation

