

Instruction of SLIM SWITCH SERIES

- Slim ON/OFF switch, comes in 4 different style.
- Fits 1" or 7/8" handlebars.

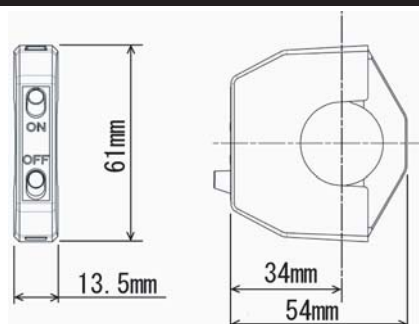


① ② ③ ④

- ① Button seesaw type
- ② Flat seesaw type
- ③ Toggle type
- ④ Slide type

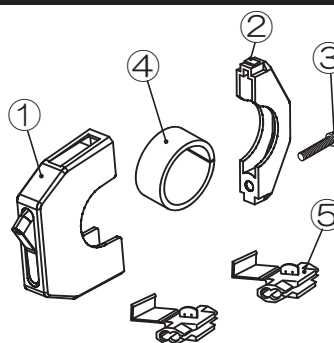
Specification

- DC6-12V
- Max. current 15A (12V:180W, 6V:90W)
- Wire length 800mm
- Dimension 61×54×13.5mm



Components

No.	DESCRIPTION	Q'TY
①	SWITCH	1
②	LOWER BRACKET	1
③	SCREW(M4)	1
④	RUBBER BAND	1
⑤	INSULATION DISPLACEMENT CONNECTOR	2



Installation & Wiring

- ※ Before installation, find space (around 15mm) at any straight area of the handlebar.
- 1. Put the wire of ①SWITCH into the hole of ②LOWER BRACKET (process 1).
- 2. Bind ④RUBBER BAND on handlebar and install ①SWITCH and ②LOWER BRACKET (process 2), and then tighten with ③SCREW(M4) (process 3). Be careful not to involve the wire.
- 3. Check the installation is not loose.
- ※ Do not tighten the screw too much otherwise the switch housing is damaged.
- 4. Connect the switch wire to any wire you want to operate by ON/OFF switching using ⑤INSULATION DISPLACEMENT CONNECTOR or terminals (not supplied) or soldering.
- ※ ⑤INSULATION DISPLACEMENT CONNECTOR is for 7A and cannot be used over 80W. For use over 80W, wiring by terminals or soldering must be needed.

Using ⑤INSULATION DISPLACEMENT CONNECTOR or terminals (not supplied) or soldering.

