



EU-TYPE EXAMINATION CERTIFICATE



The following model of Personal Protective Equipment has been subjected to an EU-type examination in accordance with the module B of the PPE regulation (2016/425) and has been shown to satisfy to essential health and safety requirements.

Certificate N° 0075/1744/162/12/22/2229

Issued by CTC, Notified Body N°0075, to the following model of personal protective equipment :

Manufacturer : **RICHA N.V.**
Westerring 27, 9700 Oudenaarde
BELGIUM

Description

PPE Type : *Protective garments for motorcycle riders: class of protection A*

Product reference : AIRSUMMER TROUSERS

Article code : Black - 7AIRS100, Big Size Black - 7AIRSBS100, Short Black - 7AIRSS100, Light Grey - 7AIRS200

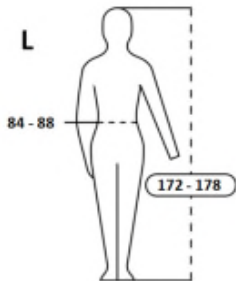
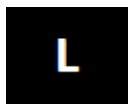
Available sizes : Standard size range : S to 6XL
Large size range : 8XL - 10XL - 12XL

Pictures :



RICHA N.V.
WESTERRING 27
9700 OUDENAARDE
BELGIUM
www.richa.eu

ORDER NO.
03PS13-21



Reference standard :

Levels of performance / class of protection

EN ISO 13688:2013

-

EN 17092-4:2020

CLASS A GARMENT

At the date of the certificate, the product is in compliance with Annex XVII of REACH regulation (n° 1907/2006 and revisions)

Full description of the PPE, reference rules verified in the context of the EU-type examination and information given on the product are detailed in the manufacturer's technical file and the Instruction for Use index 01 dated from December 2022 and user notice V02/2021.

NOTA : Any modification to new items of the personal protective equipment object of this EU type approval certificate or any modification of the information contained in the manufacturer technical file which served for the deliverance of the EU type approval certificate (change of address, change of company status) should be brought to the attention of the notified body in accordance with Annex V §7.2 of Regulation 2016/425. Any marking on the PPE which is not concerned by the Regulation (UE) 2016/425, is not covered by this certificate.

Issued in Lyon by
Didier GUISSADO
Certification and Quality Manager

Date of first issue : 20 December 2022
End of validity date : 20 December 2027



In application of the Regulation 2016/425 of the European parliament and the Council of 9th March 2016 related to Personal Protective Equipment and repealing the Directive 89/686/EEC.



Accreditation n° 5-0594
Scope available on:
www.cofrac.fr

www.ctcgroupe.com

cemarking@ctcgroupe.com

CTC - 4, rue Hermann Frenkel - 69367 Lyon cedex 07 - France
Tél. : +33 (0)4 72 76 10 10 - Fax : +33 (0)4 72 76 10 00 - ctclyon@ctcgroupe.com

Comité Professionnel de Développement Économique (CPDE) Cuir: Chaussure Maroquinerie Ganterie
Loi 78-654 du 22.06.1978 - Siret 77564972600160 - Code NAF 9412Z - TVA FR 88775649726

RICHA N.V.

MANUFACTURER'S TECHNICAL FILE TO THE PPE
REGULATION 2016/425

Reference of the product	:	AIRSUMMER TROUSERS
Article code	:	Black - 7AIRS100, Big Size Black - 7AIRSBS100, Short Black - 7AIRSS100, Light Grey - 7AIRS200
Technical file index	:	01
Last update	:	December 2022

IDENTIFICATION

Reference of the product	:	AIRSUMMER TROUSERS
Article code	:	Black - 7AIRS100, Big Size Black - 7AIRSBS100, Short Black - 7AIRSS100, Light Grey - 7AIRS200
This product is a		Basic model
Technical file index :	:	01
Last update :	:	December 2022

Manufacturer:

RICHA N.V.
Westerring 27, 9700 Oudenaarde
BELGIUM

tel : 0032 55 235326

fax : 0032 55 428110

Factories:

IE MOTO CO LTD
ROOM 202 2FL BASANGGA 124, SANGIL DONG KANGDONG GU
SOUTH KOREA

tel: *00821035202449

GARMENT DESCRIPTION

General description and intended use:

This product is a Trousers and it is a basic model.

This garment is a category II PPE.

This garment is designed for motorcycle riders. It offers a minimum necessary degree of protection from impact and abrasion, using materials and construction that meet lower requirements than for parts 2 and 3 of the EN 17092 series. Class A garments are expected to have the least ergonomic and weight penalties.

Visual description of the garment :



Risk assessment (Essential Health and Safety Requirement. Annex II - PPE Regulation)

		Applicable	Covered by
§1	Requirements defined in the Annex II §1 are applicable to all PPE	<input checked="" type="checkbox"/>	<input checked="" type="checkbox"/> Standard <input type="checkbox"/> Instruction for use <input checked="" type="checkbox"/> Marking
§1.4	Manufacturer's instructions and information is available	<input checked="" type="checkbox"/>	<input checked="" type="checkbox"/> Standard <input checked="" type="checkbox"/> Instruction for use <input type="checkbox"/> Marking
§2.1	PPE incorporating adjustments systems	<input checked="" type="checkbox"/>	<input checked="" type="checkbox"/> Standard <input checked="" type="checkbox"/> Instruction for use <input checked="" type="checkbox"/> Marking
§2.2	PPE is designed and manufactured in a way that perspiration resulting from use is minimised. Otherwise it must be equipped with means of absorbing perspiration.	<input checked="" type="checkbox"/>	<input checked="" type="checkbox"/> Standard <input checked="" type="checkbox"/> Instruction for use <input type="checkbox"/> Marking
§2.4	If it is known that the design performance of new PPE may be significantly affected by ageing, the month and year of manufacture and/or, if possible, the month and year of obsolescence must be indelibly and unambiguously marked on each item of PPE placed on the market and on its packaging.	<input checked="" type="checkbox"/>	<input type="checkbox"/> Standard <input checked="" type="checkbox"/> Instruction for use <input checked="" type="checkbox"/> Marking
§2.4	Where appreciable and rapid deterioration in PPE performance is likely to be caused by ageing resulting from the periodic use of a cleaning process recommended by the manufacturer, the latter must, if possible, affix a marking to each item of PPE placed on the market indicating the maximum number of cleaning operations that may be carried out before the equipment needs to be inspected or discarded. Where such a marking is not affixed, the manufacturer must give that information in his instructions	<input checked="" type="checkbox"/>	<input type="checkbox"/> Standard <input checked="" type="checkbox"/> Instruction for use <input checked="" type="checkbox"/> Marking
§2.5	PPE which may be caught up during use	<input checked="" type="checkbox"/>	<input type="checkbox"/> Standard <input checked="" type="checkbox"/> Instruction for use <input type="checkbox"/> Marking
§2.9	PPE incorporating components which can be adjusted or removed by the user	<input checked="" type="checkbox"/>	<input type="checkbox"/> Standard <input checked="" type="checkbox"/> Instruction for use <input type="checkbox"/> Marking
§2.12	PPE bearing one or more identification markings or indicators directly or indirectly relating to health and safety	<input checked="" type="checkbox"/>	<input checked="" type="checkbox"/> Standard <input checked="" type="checkbox"/> Instruction for use <input checked="" type="checkbox"/> Marking
§2.14	Multi-risk PPE	<input checked="" type="checkbox"/>	<input checked="" type="checkbox"/> Standard <input checked="" type="checkbox"/> Instruction for use <input checked="" type="checkbox"/> Marking
§3.1.1	The PPE is intended to protect against impact caused by falling or ejected objects and collisions of parts of the body with an obstacle	<input checked="" type="checkbox"/>	<input checked="" type="checkbox"/> Standard <input checked="" type="checkbox"/> Instruction for use <input checked="" type="checkbox"/> Marking
§3.3	The PPE is intended to protect against mechanical injuries	<input checked="" type="checkbox"/>	<input checked="" type="checkbox"/> Standard <input checked="" type="checkbox"/> Instruction for use <input checked="" type="checkbox"/> Marking
Specific application	Motorcycle garment	<input checked="" type="checkbox"/>	<input checked="" type="checkbox"/> Standard <input checked="" type="checkbox"/> Instruction for use <input checked="" type="checkbox"/> Marking

Garment constitution

	Material reference	Material description	Color	Basis weight or thickness	Present in zone?		
					Z1	Z2	Z3
Outer material	IEM-MT#12 (POLY 600D 82T P2T BLACK)	100% polyester	Black	235 g/m ²	x	x	x
	IEM-MT#12-LG (POLY 600D 82T P2T LIGHT GREY)	100% polyester	Light Grey	235 g/m ²	x	x	x
	IEM-MT#2 (P2M 320-1 MESH BLACK)	100% polyester	Black	312 g/m ²		x	x
	IEM-MT#2-LG (P2M 320-1 MESH LIGHT GREY)	100% polyester	Light Grey	312 g/m ²		x	x
Lining	IEM-MT#25 (POLY MESH C-008 BLACK)	100% polyester	Black	70 g/m ²			
	IEM-MT#22 (POLY MESH C-008 SILVER)	100% polyester	Silver	70 g/m ²			
Protector pocket	GEN-MT#47 (VELCRO (HOOK & LOOP) 0,75 INCH)	100% nylon	Black				
Button	GEN-MT#244 (SPRING SNAP BLACK BUTTON)		Black				
	GEN-MT#252 (BUTTON 7050 15MM)		Metallic				
Zip	GEN-MT#178 (#5 YKK NYLON CLOSE DALH SLIDER)		Black				
	GEN-MT#12 (YBS CONNECTION ZIP #8)		Black				
	GEN-MT#14 (YKK NYLON ZIP #5 (close end))		Black				

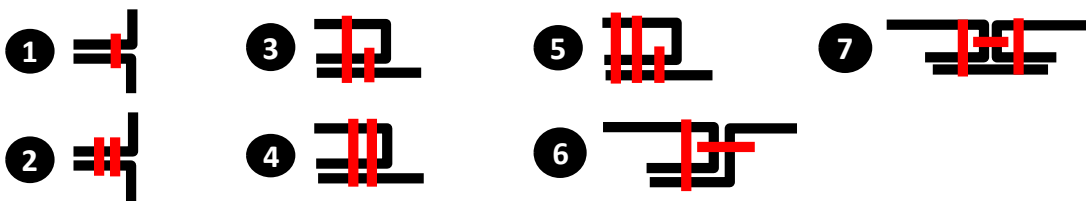
Material combinations

	Material reference	Combination present in zone?		
		Zone 1	Zone 2	Zone 3
Material combination 1	IEM-MT#12 - POLY 600D 82T P2T	X	X	X
	IEM-MT#25 - POLY MESH C-008			
Material combination 2	IEM-MT#2 (P2M 320-1 MESH)		X	X
	IEM-MT#25 - POLY MESH C-008			
Material combination 3	IEM-MT#12 - POLY 600D 82T P2T		X	X
	IEM-MT#12 - POLY 600D 82T P2T			

Description of the seams

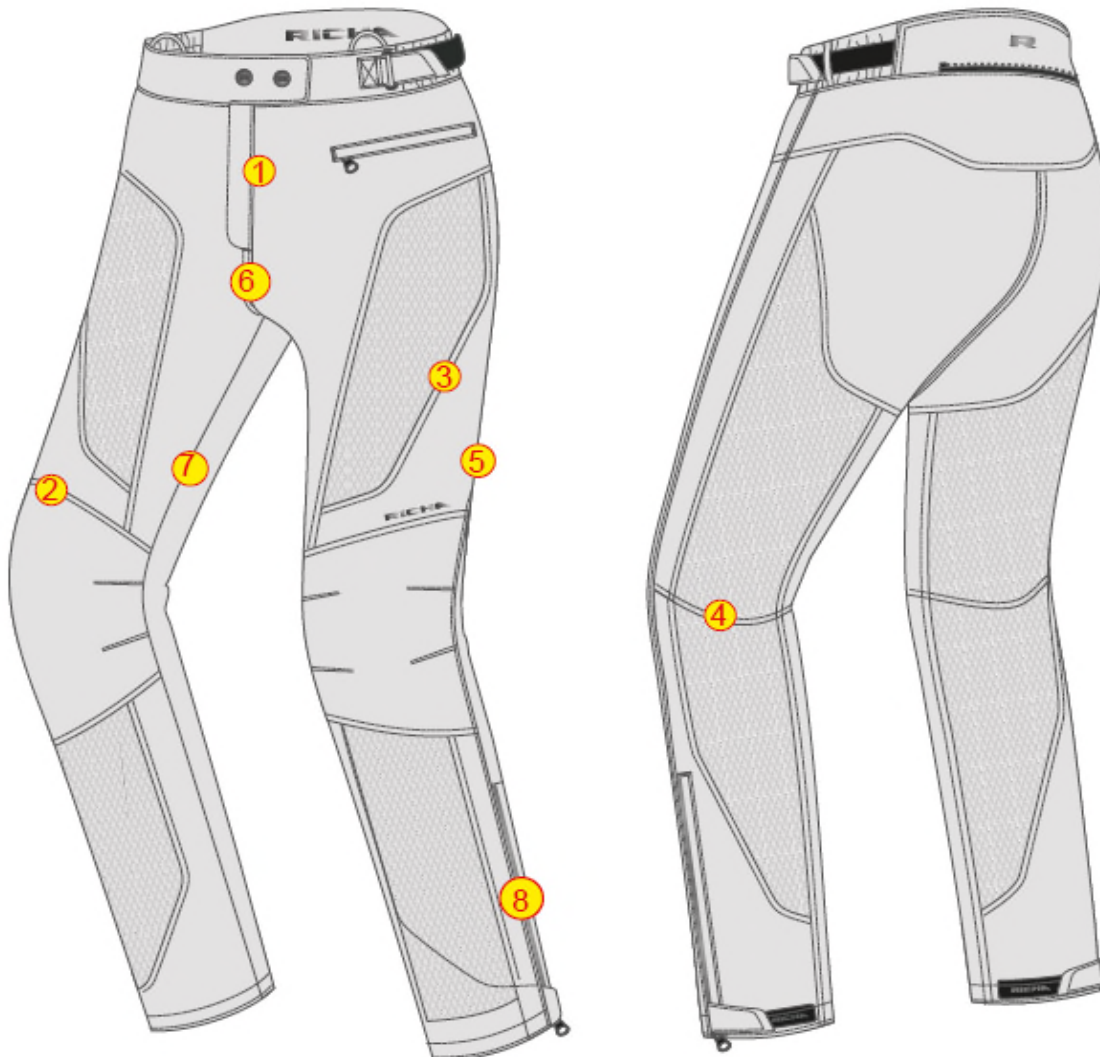
		Reference	Seam type	Zone 1	Zone 2	Zone 3	Protector pocket
Seam 1	Material 1	IEM-MT#12 - POLY 600D 82T P2T		x	x	x	
	Material 2	IEM-MT#12 - POLY 600D 82T P2T					
Seam 2	Material 1	IEM-MT#12 - POLY 600D 82T P2T +			x	x	
	Material 2	IEM-MT#2 - P2M 320-1 MES					
Seam 3	Material 1	IEM-MT#2 - P2M 320-1 MES			x	x	
	Material 2	IEM-MT#2 - P2M 320-1 MES					
Seam 4	Material 1	IEM-MT#12 - POLY 600D 82T P2T			x	x	
	Material 2	IEM-MT#12 - POLY 600D 82T P2T					
Seam 5	Material 1	IEM-MT#12 - POLY 600D 82T P2T		x	x	x	
	Material 2	IEM-MT#12 - POLY 600D 82T P2T					
Seam 6	Material 1	IEM-MT#12 - POLY 600D 82T P2T		x	x	x	
	Material 2	IEM-MT#12 - POLY 600D 82T P2T					
Seam 7	Material 1	IEM-MT#25 - POLY MESH C- 008					x
	Material 2	IEM-MT#25 - POLY MESH C- 008					

(Types of seam)



SEAM CONSTRUCTION

- 1) CENTRAL ZIPPER: [IEM-MT#12 - POLY 600D 82T P2T + IEM-MT#25 - POLY MESH C-008 + GEN-MT#14 - YKK NYLON ZIP #5 (close end): 2mm from edge] + [IEM-MT#12 - POLY 600D 82T P2T + GEN-MT#14 - YKK NYLON ZIP #5 (close end): 2mm from edge]
- 2) IEM-MT#12 - POLY 600D 82T P2T + IEM-MT#12 - POLY 600D 82T P2T: 6mm from edge
- 3) IEM-MT#12 - POLY 600D 82T P2T + IEM-MT#2 - P2M 320-1 MESH : 6mm from edge
- 4) IEM-MT#2 - P2M 320-1 MESH + IEM-MT#2 - P2M 320-1 MESH: 6mm from edge
- 5) IEM-MT#12 - POLY 600D 82T P2T + IEM-MT#12 - POLY 600D 82T P2T: 2mm from edge
- 6) IEM-MT#12 - POLY 600D 82T P2T + IEM-MT#12 - POLY 600D 82T P2T: double stitching
- 7) IEM-MT#12 - POLY 600D 82T P2T + IEM-MT#12 - POLY 600D 82T P2T: Hidden stitching
- 8) Leg opening: [IEM-MT#12 - POLY 600D 82T P2T + IEM-MT#12 - POLY 600D 82T P2T + IEM-MT#25 - POLY MESH C-008 + GEN-MT#178 - #5 YKK NYLON CLOSE DALH SLIDER: 2mm from edge] + [IEM-MT#12 - POLY 600D 82T P2T + IEM-MT#12 - POLY 600D 82T P2T + IEM-MT#25 - POLY MESH C-008 + GEN-MT#178 - #5 YKK NYLON CLOSE DALH SLIDER: 2mm from edge]



PROTECTION SCOPE

This garment meets the essential health and safety requirements of the Personal Protective Equipment Regulation (UE) 2016/425.

It is a category II product.

This garment is designed for motorcycle riders. It offers a minimum necessary degree of protection from impact and abrasion, using materials and construction that meet lower requirements than for parts 2 and 3 of the EN 17092 series. Class A garments are expected to have the least ergonomic and weight penalties.

GENERAL REQUIREMENTS

Range of size

Size	S	M	L	XL	2XL	3XL	4XL	5XL
Heigh (cm)	166 - 172	169 - 175	172 - 178	175 - 181	178 - 184	181 - 187	184 - 190	185 - 191
Waist girth (cm)	74 - 78	79 - 83	84 - 88	89 - 93	94 - 98	99 - 103	104 - 108	109 - 113

Size	6XL	8XL
Heigh (cm)	186 - 192	187 - 193
Waist girth (cm)	114 - 118	119 - 123

SPECIFIC REQUIREMENTS AND PERFORMANCE LEVELS

Standard EN 17092-4:2020

			Zone 1	Zone 2	Zone 3
Dimensional stability of the garment (N/A if no cleaning required)		%	± 5		
Impact protector location and fixation		over the correct location on the body, secured within the pockets and secured in their position.			
External impact protector location and fixation		pocket shall meet the requirements of the appropriate zone. Protector shall not be released during testing.			
Impact abrasion	Darmstadt / no hole on the 9 test pieces	rpm	265	147	n/a
Seam strength	by zone	N/mm	≥6	≥6	≥4
	protector pocket	N/mm	≥4		
Seam construction	general	-	at least one line protected		
	leather or textile abrasion overlays	-	at least 2 rows of stitching		
	hard shell overlays	-	at least 2 rows of stitching		
Tear strength	by zone	N	≥35	≥25	≥25
	protector pocket	N	≥10		
Restraint	Two pieces suits	no gap and no opening			
	sleeve	no extraction of the cone			
	Thumb loops distance A-B	mm	max 140		
Innocuousness	EN ISO 13688:2013 § 4.2 + REACH	pH, Cr VI (leather), Ni (metal in contact with skin), Azo dyes (if contact with skin), Tin, Cadmium (coated material), PAH (plastic in contact with skin), phtalates (polymers in contact with skin)			
Structural closure	same test as seams	N/mm	≥6	≥6	≥4
Vents	protected by same SSL or by SSL zone 3 if opening limited to 4cm at 90° of the length				
Pockets	protected by same SSL extended along the interior of the pocket beyond the opening at least an additional 3 cm				
Fit and ergonomics	EN 17092-1, 5.5 : all answers positive				

TEST REPORTS

1	L210407735_1
2	L210305419_1
3	L210713479_1
4	L220814939_1
5	L221120843_1
6	IDIADA MT21050137
7	L210407748_2

8	L210305296_1
9	L210611653_1
10	L220814940_1
11	L220814938_1
12	L221018452_1
13	SATRA 2777/10609-01/E00-00
14	SATRA 2777/10608-02/E00-00

15	SATRA 2777/13054-03/E00-00
16	SATRA 2777/10815-01/E00-00
17	SATRA 2777/11251-01/E00-00

		Reports
4.1 - General		
4.1.1 Innocuousness and REACh - Annex XVII		1+2+3+4+5+6
4.1.3 Dimensional stability of garments	Washing Température : 30° Number of washing cycles : 5	11
4.2 - Impact Energy Absorption		
4.2.1 General		11+13+14+15+16+17
4.2.2 Impact protector location and fixation		11+13+14+15+16+17
4.3 Impact abrasion resistance		7+10
4.4 - Structurally Strong Seams (SSS)		
4.4.1 - General		11
4.4.2 Seam strength		9+10+11+12
4.5 - Tear strength		
4.5 Tear strength		7+8+10
4.6- Restraint		
4.6.1 - General		n.a
4.6.2 Two-piece suit requirements for joint between the upper and the lower part		12
4.6.3 Garment sleeve restraint		n.a
4.7- Additional garment construction requirements		
4.7.2 - Structural closures		10+11
4.7.3 - Vents		n.a
4.7.4 - Pockets		11
4.7.5 - Zone intrusions		n.a
4.7.7 - Use of open mesh materials		10
4.7.8 - Use of retroreflective materials (optional)	Performance of the retroreflective materials shall be in conformity with Clause 6 of EN 1150:1999. This requirement does not apply to reflective elements included for reasons of design or decoration.	n.a
4.8 Fit and ergonomics		11

MARKING - PACKAGING

Marking of the garment:

Logo of Manufacturer

Address of Manufacturer

Logo 

Product reference: AIRSUMMER TROUSERS

Article Code: Black - 7AIRS100, Big Size Black - 7AIRSBS100, Short Black - 7AIRSS100, Light Grey - 7AIRS200

Size indicator

Pictograms

Indication of the protection Class A

Date of Manufacture (month/year) and/or serial/batch number

Date of obsolescence (month/year) if applicable

Location of the marking: Inner labels

Garment marking example:



Method of marking of the garment:

Labels

PPE subject to ageing :

Peremption period: 5 years after first use when stored in appropriate conditions (humidity, temperature, clean , ventilated, light). Before use, the garment shall be visually controlled. In case of deterioration the garment must be scrapped (abrasion, cut, tear, ...).

Cleaning instructions:

Number of cleaning cycles:	
Care Instructions:	Remove the protectors before cleaning Machine wash 30° Line dry

MEANS OF CONTROL

1. Research and development
 2. Sourcing
 3. Purchasing
 4. Documentation and traceability
 5. Receipt of raw materials / Control of supplies
 - Testing of raw materials in laboratory: pH & Azoïcs test with every new shipment. Chromium in case of leather.
 - Testing on tear and impact abrasion for all the new materials
 6. Quality control during garment manufacturing
 7. Quality control of finished garments
 8. Quality control packaging & labels
 9. Quality control finished shipment
 10. Quality control necessary documents
 11. Receipt and inspection of documents and garments at headquarters
 12. Written evaluation finished order
- See ISO 9001 certificate
Also ISO 14001 and ISO 45001 available



MANAGEMENT SYSTEM CERTIFICATE

Certificate No: 202753-2016-AQ-BEL-RvA	Initial certification date: 22 August 2016	Valid: 22 August 2019 - 21 August 2022
---	---	---

This is to certify that the management system of

Richa
Westerring 27, 9700 Oudenaarde, Belgium

has been found to conform to the Quality Management System standard:
ISO 9001:2015

This certificate is valid for the following scope:
The design, distribution, customization and post-delivery activities of motorcycle clothing and accessories.

Place and date:
Barendrecht, 07 November 2019





MGMT. SYS.
RvA C 024

The RvA is a signatory to the IAF MLA

For the issuing office:
DNV GL - Business Assurance
Zwolsseweg 1, 2994 LB, Barendrecht,
Netherlands



J.H.C.M. van Gijzen
Management Representative

Lack of fulfillment of conditions as set out in the Certification Agreement may render this Certificate invalid.
ACCREDITED UNIT: DNV GL Business Assurance B.V., Zwolsseweg 1, 2994 LB, Barendrecht, Netherlands. TEL: +31 102922686. www.dnvgl.com/business