



EU-TYPE EXAMINATION CERTIFICATE

The following model of Personal Protective Equipment has been subjected to an EU-type examination in accordance with the module B of the PPE regulation (2016/425) and has been shown to satisfy to essential health and safety requirements.



Certificate N° 0075/1744/162/06/22/1121

Issued by CTC, Notified Body N°0075, to the following model of personal protective equipment :

Manufacturer : **RICHA**
Westerring 27, 9700 Oudenaarde
BELGIUM

Description

PPE Type : *Protective garments for motorcycle riders: class of protection A*

Product reference : Brutus Gore-tex trousers

Article code : **Black – 7BRU100**
Grey/black – 7BRU200
Short Black – 7BRUS100
Short Grey/black – 7BRUS200
Long Black – 7BRUL100
S to 6XL

Available sizes :

Pictures :



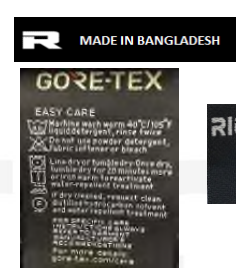
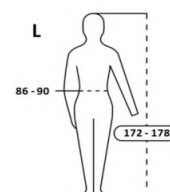
MODEL BRUTUS GORE-TEX TROUSERS	RICHA NV
ARTNR 7BRU100 - BLACK	INSPEK
ORDER NR SIZE	
01-KAD-36-21 L	

MODEL BRUTUS GORE-TEX TROUSERS	RICHA NV
ARTNR 7BRUS100 - SHORT BLACK	INSPEK
ORDER NR SIZE	
01-KAD-36-21 L	

MODEL BRUTUS GORE-TEX TROUSERS	RICHA NV
ARTNR 7BRUL100 - LONG BLACK	INSPEK
ORDER NR SIZE	
01-KAD-36-21 L	

MODEL BRUTUS GORE-TEX TROUSERS	RICHA NV
ARTNR 7BRUS200 - GREY / BLACK	INSPEK
ORDER NR SIZE	
01-KAD-36-21 L	

MODEL BRUTUS GORE-TEX TROUSERS	RICHA NV
ARTNR 7BRUS200 - SHORT GREY / BLACK	INSPEK
ORDER NR SIZE	
01-KAD-36-21 L	



Reference standard :

Levels of performance / class of protection

EN ISO 13688:2013

-

EN 17092-4:2020

CLASS A GARMENT

At the date of the certificate, the product is in compliance with Annex XVII of REACH regulation (n° 1907/2006 and revisions)

Full description of the PPE, reference rules verified in the context of the EU-type examination and information given on the product are detailed in the manufacturer's technical file index 01 dated from June 2022 and the user notice v02/2021

NOTA : Any modification to new items of the personal protective equipment object of this EU type approval certificate or any modification of the information contained in the manufacturer technical file which served for the deliverance of the EU type approval certificate (change of address, change of company status) should be brought to the attention of the notified body in accordance with Annex V §7.2 of Regulation 2016/425. Any marking on the PPE which is not concerned by the Regulation (UE) 2016/425, is not covered by this certificate.

Issued in Lyon by
Didier GUISADO

Date of first issue : 07 June 2022

End of validity date : 07 June 2027

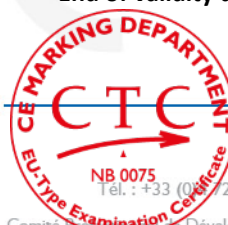
Certification and Quality Manager



In application of the Regulation 2016/425 of the European parliament and the Council of 9th March 2016 related to Personal Protective Equipment and repealing the Directive 89/686/EEC.



Accreditation n° 5-0594
Scope available on:
www.cofrac.fr



www.ctcgroupe.com

cemarking@ctcgroupe.com

CTC - 4, rue Hermann Frenkel - 69367 Lyon cedex 07 - France
Tel. : +33 (0)4 72 76 10 10 - Fax : +33 (0)4 72 76 10 00 - ctclyon@ctcgroupe.com

Comité Français de Développement Économique (CPDE) Cuir: Chaussure Maroquinerie Ganterie
Loi 78-654 du 22.06.1978 - Siret 77564972600160 - Code NAF 9412Z - TVA FR 88775649726

RICHA

MANUFACTURER'S TECHNICAL FILE TO THE PPE REGULATION 2016/425

Reference of the product	:	Brutus Gore-tex trousers
Article code	:	Black – 7BRU100 Grey/black – 7BRU200 Short Black – 7BRUS100 Short Grey/black – 7BRUS200 Long Black – 7BRUL100
Technical file index	:	01
Last update	:	June2022

IDENTIFICATION

Reference of the product	:	Brutus Gore-tex trousers
		Black – 7BRU100
		Grey/black – 7BRU200
Article code	:	Short Black – 7BRUS100
		Short Grey/black – 7BRUS200
		Long Black – 7BRUL100
This product is a basic model.		
Technical file index :	:	01
Last update :	:	June2022

Manufacturer:

RICHA
Westerring 27, 9700 Oudenaarde
BELGIUM

tel : 0032 55 235326

fax : 0032 55 428110

Factories:

KADENA SPORTSWEAR LTD
SFB#5, COMMILLA EPZ
BANGLADESH

GARMENT DESCRIPTION

General description and intended use:

This product is a trousers and it is a basic model.

This garment is a category II PPE.

This garment is designed for motorcycle riders. It offers a minimum necessary degree of protection from impact and abrasion, using materials and construction that meet lower requirements than for parts 2 and 3 of the EN 17092 series. Class A garments are expected to have the least ergonomic and weight penalties.

Visual description of the garment :



Risk assessment (Essential Health and Safety Requirement. Annex II - PPE Regulation)

		Applicable	Covered by
§1	Requirements defined in the Annex II §1 are applicable to all PPE	<input checked="" type="checkbox"/>	<input checked="" type="checkbox"/> Standard <input type="checkbox"/> Instruction for use <input checked="" type="checkbox"/> Marking
§1.4	Manufacturer's instructions and information is available	<input checked="" type="checkbox"/>	<input checked="" type="checkbox"/> Standard <input checked="" type="checkbox"/> Instruction for use <input type="checkbox"/> Marking
§2.1	PPE incorporating adjustments systems	<input checked="" type="checkbox"/>	<input checked="" type="checkbox"/> Standard <input checked="" type="checkbox"/> Instruction for use <input checked="" type="checkbox"/> Marking
§2.2	PPE is designed and manufactured in a way that perspiration resulting from use is minimised. Otherwise it must be equipped with means of absorbing perspiration.	<input checked="" type="checkbox"/>	<input checked="" type="checkbox"/> Standard <input checked="" type="checkbox"/> Instruction for use <input type="checkbox"/> Marking
§2.4	If it is known that the design performance of new PPE may be significantly affected by ageing, the month and year of manufacture and/or, if possible, the month and year of obsolescence must be indelibly and unambiguously marked on each item of PPE placed on the market and on its packaging.	<input checked="" type="checkbox"/>	<input type="checkbox"/> Standard <input checked="" type="checkbox"/> Instruction for use <input checked="" type="checkbox"/> Marking
§2.4	Where appreciable and rapid deterioration in PPE performance is likely to be caused by ageing resulting from the periodic use of a cleaning process recommended by the manufacturer, the latter must, if possible, affix a marking to each item of PPE placed on the market indicating the maximum number of cleaning operations that may be carried out before the equipment needs to be inspected or discarded. Where such a marking is not affixed, the manufacturer must give that information in his instructions	<input checked="" type="checkbox"/>	<input type="checkbox"/> Standard <input checked="" type="checkbox"/> Instruction for use <input checked="" type="checkbox"/> Marking
§2.5	PPE which may be caught up during use	<input checked="" type="checkbox"/>	<input type="checkbox"/> Standard <input checked="" type="checkbox"/> Instruction for use <input type="checkbox"/> Marking
§2.9	PPE incorporating components which can be adjusted or removed by the user	<input checked="" type="checkbox"/>	<input type="checkbox"/> Standard <input checked="" type="checkbox"/> Instruction for use <input type="checkbox"/> Marking
§2.12	PPE bearing one or more identification markings or indicators directly or indirectly relating to health and safety	<input checked="" type="checkbox"/>	<input checked="" type="checkbox"/> Standard <input checked="" type="checkbox"/> Instruction for use <input checked="" type="checkbox"/> Marking
§2.14	Multi-risk PPE	<input checked="" type="checkbox"/>	<input checked="" type="checkbox"/> Standard <input checked="" type="checkbox"/> Instruction for use <input checked="" type="checkbox"/> Marking
§3.1.1	The PPE is intended to protect against impact caused by falling or ejected objects and collisions of parts of the body with an obstacle	<input checked="" type="checkbox"/>	<input checked="" type="checkbox"/> Standard <input checked="" type="checkbox"/> Instruction for use <input checked="" type="checkbox"/> Marking
§3.3	The PPE is intended to protect against mechanical injuries	<input checked="" type="checkbox"/>	<input checked="" type="checkbox"/> Standard <input checked="" type="checkbox"/> Instruction for use <input checked="" type="checkbox"/> Marking
Specific application	Motorcycle garment	<input checked="" type="checkbox"/>	<input checked="" type="checkbox"/> Standard <input checked="" type="checkbox"/> Instruction for use <input checked="" type="checkbox"/> Marking

Garment constitution

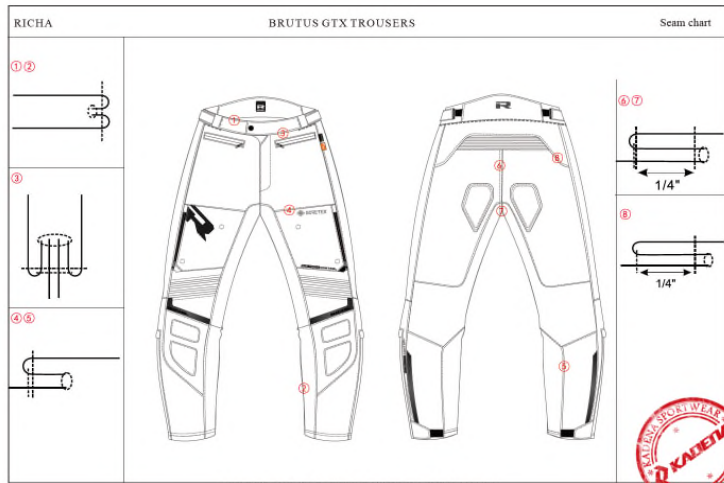
	Material reference	Material description	Color	Basis weight or thickness	Present in zone?		
					Z1	Z2	Z3
Outer material	KAD-MT#44 (600D OXFORD PU COATING BLACK (MTM2345))	100% polyester	Black	290 g/m ²	x	x	x
	KAD-MT#122 (600D OXFORD PU COATING LIGHT GREY (MTM2345))	100% polyester	Light grey	290 g/m ²	x	x	x
	KAD-MT#27 (600D POLYESTER RIPSTOP (MTM2424))	100% polyester	Black	300 g/m ²	x	x	
	KAD-MT#6 - BONDED FABRIC BLACK (MTM0006)	86% polyester, 14% spandex	Black	260 g/m ²		x	x
	KAD-MT#110 - HEAVY COATED FABRIC (MTM3742)	84% polyester, 9% nylon, 7% PU	Black	395 g/m ²	x		
	KAD-MT#68 - HEAVY CORDURA (MTM3392)	100% polyester	Black	275 g/m ²		x	
	KAD-MT#66 (PU LEATHER (MTP0075))	100% leather	Black				x
Lining	KAD-MT#8 (5:1 MESH (MTM0079))	100% polyester	Black	85 g/m ²			
	KAD-MT#37 - 210T TAFFETA WITH PU COATING 8K/3K (MTL0018)	100% polyester	Black	92 g/m ²			
	KAD-MT#35 - MESH FABRIC BLACK (MTM1338)	100% polyester	Black	320 g/m ²			
Removable lining	GEN-MT#64 (bFRP40MNHS 2L PL4 (AF4M09P000P4U))	100% PTFE	Orange/grey				
	KAD-MT#119 - IMITATION COTTON FABRIC (MTM0796B)	100% polyester	Black	220 g/m ²			
Protector pocket	KAD-MT#4 (210T TAFFETA BLACK (MTL0014))	100% polyester	Black	60 g/m ²			
Collar	KAD-MT#24 - NEOPRENE 2,5MM (MTN0001)	85% SBR, 15% polyester	Black				
Button	GEN-MT#181 - FRONT SNAP						
	GENMT#20 - BUTTON ACD BRASS (BACKSIDE OF						
	GEN-MT#26 - YKK #5 VISLON ZIPPER						
Zip	GEN-MT#98 - SAB 5# NYLON O/E ZIPPER						
	GEN-MT#38 - VISLON #8 O/E 8V ZIPPER (YBS)						
	GEN-MT#104 - YKK #5 FLAT VISLON ZIPPER W/ LOCK SLIDER						
	GEN-MT#97 - SAB #3 NYLON ZIPPER (ZPN3OL-6)						
Vent	KAD-MT#121 (HEAVY MESH FABRIC 325G BLACK (MTM0055))	100% polyester	Black	325 g/m ²			

Material combinations

	Material reference	Combination present in zone?		
		Zone 1	Zone 2	Zone 3
Material combination 1	600D OXFORD PU COATING (black or blue or red or light grey or yellow)	x	x	x
	KAD-MT#8 - 5:1 MESH(MTM0079)			
Material combination 2	KAD-MT#6 - BONDED FABRIC BLACK (MTM0006)		x	x
	KAD-MT#8 - 5:1 MESH(MTM0079)			
Material combination 3	KAD-MT#68 - HEAVY CORDURA (MTM3392)		x	x
	KAD-MT#8 - 5:1 MESH(MTM0079)			
Material combination 4	KAD-MT#110 - HEAVY COATED FABRIC (MTM3742)	x	x	x
	KAD-MT#8 - 5:1 MESH(MTM0079)			
Material combination 5	KAD-MT#35 - MESH FABRIC BLACK (MTM1338)		x	x
	KAD-MT#8 - 5:1 MESH(MTM0079)			
Material combination 6	KAD-MT#121 - HEAVY MESH FABRIC 325G BLACK		x	x
	KAD-MT#8 - 5:1 MESH(MTM0079)			

Description of the seams

		Reference	Zone 1	Zone 2	Zone 3	Protector pocket
Seam 1	Material 1	600D OXFORD PU COATING (black or light grey)		x	x	
	Material 2	KAD-MT#68 - HEAVY CORDURA (MTM3392)				
Seam 2	Material 1	600D OXFORD PU COATING (black or light grey)		x	x	
	Material 2	600D OXFORD PU COATING (black or light grey)				
Seam 3	Material 1	600D OXFORD PU COATING (black or light grey)	x	x	x	
	Material 2	600D OXFORD PU COATING (black or light grey)				
Seam 4	Material 1	600D OXFORD PU COATING (black or light grey)		x	x	
	Material 2	KAD-MT#68 - HEAVY CORDURA (MTM3392)				
Seam 5	Material 1	600D OXFORD PU COATING (black or light grey)		x	x	
	Material 3	600D OXFORD PU COATING (black or light grey)				
Seam 6	Material 1	KAD-MT#6 - BONDED FABRIC BLACK (MTM0006)		x	x	
	Material 3	KAD-MT#6 - BONDED FABRIC BLACK (MTM0006)				
Seam 7	Material 1	600D OXFORD PU COATING (black or light grey)	x	x	x	
	Material 2	600D OXFORD PU COATING (black or light grey)				
Seam 8	Material 1	KAD-MT#4 (210T TAFFETA BLACK (MTL0014))				x
	Material 2	KAD-MT#8 (5:1 MESH (MTM0079))				



STYLE NAME:	BRUTUS GORE-TEX TROUSERS					
SEAM NUMBER	OUTER MATERIAL 1	INNER MATERIAL 1A	INNER MATERIAL 1B	INNER MATERIAL 1C	OUTER MATERIAL 2	INNER MATERIAL 2A
1 & 2	KAD-MT#44 - 600D OXFORD PU COATING BLACK (MTM2345)				KAD-MT#68 - HEAVY CORDURA (MTM3392)	
3	KAD-MT#44 - 600D OXFORD PU COATING BLACK (MTM2345)	KAD-MT#126 - INTERLINING FABRIC (MTM0089)	KAD-MT#4 - 210T TAFFETA BLACK (MTL0014)		KAD-MT#44 - 600D OXFORD PU COATING BLACK (MTM2345)	KAD-MT#8 - 5:1 MESH (MTM0079)
4	KAD-MT#44 - 600D OXFORD PU COATING BLACK (MTM2345)	KAD-MT#121 - HEAVY MESH FABRIC 325G BLACK (MTM0055)			KAD-MT#44 - 600D OXFORD PU COATING BLACK (MTM2345)	
5	KAD-MT#44 - 600D OXFORD PU COATING BLACK (MTM2345)				KAD-MT#68 - HEAVY CORDURA (MTM3392)	
6	KAD-MT#44 - 600D OXFORD PU COATING BLACK (MTM2345)				KAD-MT#44 - 600D OXFORD PU COATING BLACK (MTM2345)	
7	KAD-MT#6 - BONDED FABRIC BLACK (MTM0006)				KAD-MT#6 - BONDED FABRIC BLACK (MTM0006)	

PROTECTION SCOPE

This garment meets the essential health and safety requirements of the Personal Protective Equipment Regulation (UE) 2016/425.

It is a category II product.

This garment is designed for motorcycle riders. It offers a minimum necessary degree of protection from impact and abrasion, using materials and construction that meet lower requirements than for parts 2 and 3 of the EN 17092 series. Class A garments are expected to have the least ergonomic and weight penalties.

GENERAL REQUIREMENTS

Range of size

Size								
Heigh (cm)	166 - 172	169 - 175	172 - 178	175 - 181	178 - 184	181 - 187	184 - 190	185 - 191
Waist girth (cm)	76 - 80	81 - 85	86 - 90	91 - 95	96 - 100	101 - 105	106 - 110	111 - 115

SPECIFIC REQUIREMENTS AND PERFORMANCE LEVELS

Standard EN 17092-4:2020

		Zone 1		Zone 2		Zone 3	
Dimensional stability of the garment (N/A if no cleaning required)		%	± 5				
Impact protector location and fixation		over the correct location on the body, secured within the pockets and secured in their position.					
External impact protector location and fixation		pocket shall meet the requirements of the appropriate zone. Protector shall not be released					
Impact abrasion	Darmstadt / no hole on the 9 test pieces	rpm	265	147	n/a		
Seam strength	by zone	N/mm	≥6	≥6	≥4		
	protector pocket	N/mm	≥4				
Seam construction	general	-	at least one line protected				
	leather or textile abrasion overlays	-	at least 2 rows of stitching				
	hard shell overlays	-	at least 2 rows of stitching				
Tear strength	by zone	N	≥35	≥25	≥25		
	protector pocket	N	≥10				
Restraint	Two pieces suits	no gap and no opening					
	sleeve	no extraction of the cone					
	Thumb loops distance A-B	mm	max 140				
Innocuousness	EN ISO 13688:2013 § 4.2 + REACH	pH, Cr VI (leather), Ni (metal in contact with skin), Azo dyes (if contact with skin), Tin, Cadmium (coated material), PAH (plastic in contact with skin), phtalates (polymers in contact with skin)					
Structural closure	same test as seams	N/mm	≥6	≥6	≥4		
Vents		protected by same SSL or by SSL zone 3 if opening limited to 4cm at 90° of the length					
Pockets		protected by same SSL extended along the interior of the pocket beyond the opening at least an additional 3 cm					
Fit and ergonomics		EN 17092-1, 5.5 : all answers positive					

TEST REPORTS

1	Satra 2777/13054-03/E00-00
2	Satra 2777/11251-01/E00-00
3	Satra 2777/10815-01/E00-00
4	Satra 2777/10609-01/E00-00
5	Satra 2777/10608-02/E00-00
6	L210100830_1
7	L220202308_1

8	L210611846_1
9	L210305452_1
10	L220202307_1
11	L220202235_1
12	L220508843-1
13	L220202251_1
14	L210100806_1

		Reports
4.1 - General		
4.1.1 Innocuousness and RECh - Annex XVII		6+7+8+9+13
4.1.3 Dimensional stability of garments	Washing Température : 40°C Number of washing cycles : 5	10
4.2 - Impact Energy Absorption		
4.2.1 General		1+2+3+4+5+10
4.2.2 Impact protector location and fixation		1+2+3+4+5+10
4.3 Impact abrasion resistance		10+11+12
4.4 - Structurally Strong Seams (SSS)		
4.4.1 - General		10
4.4.2 Seam strength		10
4.5 - Tear strength		
4.5 Tear strength		10+11+14
4.6- Restraint		
4.6.1 - General		n.a
4.6.2 Two-piece suit requirements for joint between the upper and the lower part		11
4.6.3 Garment sleeve restraint		n.a
4.7- Additional garment construction requirements		
4.7.2 - Structural closures		10
4.7.3 - Vents		10
4.7.4 - Pockets		10
4.7.5 - Zone intrusions		n.a
4.7.7 - Use of open mesh materials		10
4.7.8 - Use of retroreflective materials (optional)	Performance of the retroreflective materials shall be in conformity with Clause 6 of EN 1150:1999. This requirement does not apply to reflective elements included for reasons of design or decoration.	n.a
4.8 Fit and ergonomics		10

MARKING - PACKAGING

Marking of the garment:

Logo of Manufacturer

Address of Manufacturer

Logo



Product reference:

Brutus Gore-tex trousers

Black – 7BRU100

Grey/black – 7BRU200

Article Code:

Short Black – 7BRUS100

Short Grey/black – 7BRUS200

Long Black – 7BRUL100

Size indicator

Pictograms

Indication of the protection Class A

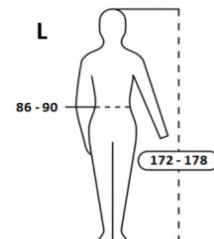
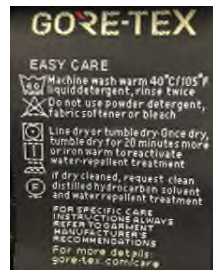
Date of Manufacture (month/year) and/or serial/batch number

Date of obsolescence (month/year) if applicable

Location of the marking: Inside labels

Garment marking example:

MODEL BRUTUS GORE-TEX TROUSERS ARTNR 7BRU100 - BLACK ORDER NR SIZE 01-KAD-36-21 L	RICHA NV INSPEK
MODEL BRUTUS GORE-TEX TROUSERS ARTNR 7BRUS100 - SHORT BLACK ORDER NR SIZE 01-KAD-36-21 L	RICHA NV INSPEK
MODEL BRUTUS GORE-TEX TROUSERS ARTNR 7BRUL100 - LONG BLACK ORDER NR SIZE 01-KAD-36-21 L	RICHA NV INSPEK
MODEL BRUTUS GORE-TEX TROUSERS ARTNR 7BRU200 - GREY / BLACK ORDER NR SIZE 01-KAD-36-21 L	RICHA NV INSPEK
MODEL BRUTUS GORE-TEX TROUSERS ARTNR 7BRUS200 - SHORT GREY / BLACK ORDER NR SIZE 01-KAD-36-21 L	RICHA NV INSPEK



Method of marking of the garment:

Labels

PPE subject to ageing :

Peremption period: 5 years when stored in appropriate conditions (humidity, temperature, clean , ventilated, light). Before use, the garment shall be visually controlled. In case of deterioration the garment must be scrapped (abrasion, cut, tear, ...).

Cleaning instructions:

Number of cleaning cycles:	5
Care Instructions:	Remove protectors before cleaning Machine wash 40°C

MEANS OF CONTROL

1. Research and development
2. Sourcing
3. Purchasing
4. Documentation and traceability
5. Receipt of raw materials / Control of supplies
- Testing of raw materials in laboratory: pH & Azoïcs test with every new shipment
6. Quality control during glove manufacturing
7. Quality control of finished gloves
8. Quality control packaging & labels
9. Quality control finished shipment
10. Quality control necessary documents
11. Receipt and inspection of documents and gloves at headquarters
12. Written evaluation finished order

DNV·GL

MANAGEMENT SYSTEM CERTIFICATE

Certificate No: 202753-2016-AQ-BEL-RvA Initial certification date: 22 August 2016 Valid: 22 August 2019 - 21 August 2022

This is to certify that the management system of

Richa

Westerring 27, 9700 Oudenaarde, Belgium

has been found to conform to the Quality Management System standard:
ISO 9001:2015

This certificate is valid for the following scope:
The design, distribution, customization and post-delivery activities of motorcycle clothing and accessories.

Place and date:
Barendrecht, 07 November 2019



For the issuing office:
DNV GL - Business Assurance
Zwolsseweg 1, 2994 LB, Barendrecht,
Netherlands

J.H.C.K. van Gijzen
Management Representative

Lack of fulfillment of conditions as set out in the Certification Agreement may render this Certificate invalid.
ACCREDITED UNIT: DNV GL Business Assurance B.V., Zwolsseweg 1, 2994 LB, Barendrecht, Netherlands. TEL: +31 102922690. www.dnvgl.com/assurance