



EU-TYPE EXAMINATION CERTIFICATE



The following model of Personal Protective Equipment has been subjected to an EU-type examination in accordance with the module B of the PPE regulation (2016/425) and has been shown to satisfy to essential health and safety requirements.

Certificate N° 0075/1744/162/05/22/0919 - EXT 01/05/22

Issued by CTC, Notified Body N°0075, to the following model of personal protective equipment :

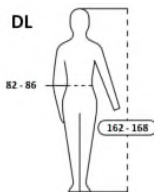
Manufacturer : **RICHA**
Westerring 27, 9700 Oudenaarde
BELGIUM

Description

PPE Type : *Protective garments for motorcycle riders: class of protection A*
Product reference : Colorado Trousers women
Article code : Women black – 7CLD100
Women black/yellow – 7CLD650
Women short black 7CLDS100

Available sizes : XS to 4XL

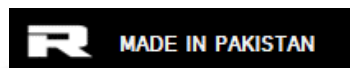
Pictures :



MATERIAL COMPOSITION
OUTSHELL:
80% nylon
10% cotton
10% polyester
LINING:
80% polyester
20% nylon
REMOVABLE LINING:
100% polyester

Machine wash cold
Do not bleach
Do not tumble dry
Do not iron
Do not dry clean
REMOVE THE PROTECTORS BEFORE CLEANING

MODEL COLORADO TROUSERS WOMEN ARTNR 7CLD650 - BLACK / YELLOW ORDER NR SIZE 01-PW-25-22 L	RICHA NV INSPEK
MODEL COLORADO TROUSERS WOMEN ARTNR 7CLD100 - BLACK ORDER NR SIZE 01-PW-25-22 L	RICHA NV INSPEK
MODEL COLORADO TROUSERS WOMEN ARTNR 7CLDS100 - SHORT BLACK ORDER NR SIZE 01-PW-25-22 L	RICHA NV INSPEK



Reference standard :

Levels of performance / class of protection

EN ISO 13688:2013

-

EN 17092-4:2020

CLASS A GARMENT

At the date of the certificate, the product is in compliance with Annex XVII of REACH regulation (n° 1907/2006 and revisions)

Full description of the PPE, reference rules verified in the context of the EU-type examination and information given on the product are detailed in the manufacturer's technical file index 01 dated from May 2022 and the user notice v02/2021

NOTA : Any modification to new items of the personal protective equipment object of this EU type approval certificate or any modification of the information contained in the manufacturer technical file which served for the deliverance of the EU type approval certificate (change of address, change of company status) should be brought to the attention of the notified body in accordance with Annex V §7.2 of Regulation 2016/425. Any marking on the PPE which is not concerned by the Regulation (UE) 2016/425, is not covered by this certificate.

Issued in Lyon by
Didier GUISSADO
Certification and Quality Manager

Date of first issue : 09 May 2022
End of validity date : 09 May 2027



www.ctcgroupe.com

cemarking@ctcgroupe.com



Accreditation n° 5-0594
Scope available on:
www.cofrac.fr

CTC - 4, rue Hermann Frenkel - 69367 Lyon cedex 07 - France
(0)4 72 76 10 10 - Fax : +33 (0)4 72 76 10 00 - ctclyon@ctcgroupe.com

Comité Professionnel de Développement Économique (CPDE) Cuir: Chaussure Maroquinerie Ganterie
Loi 78-654 du 22.06.1978 - Siret 77564972600160 - Code NAF 9412Z - TVA FR 88775649726

RICHA

MANUFACTURER'S TECHNICAL FILE TO THE PPE REGULATION
2016/425

Reference of the product	:	Colorado Trousers women
Article code	:	Women black – 7CLD100 Women black/yellow – 7CLD650 Women short black 7CLDS100
Technical file index	:	01
Last update	:	May 2022

IDENTIFICATION

Reference of the product	:	Colorado Trousers women Women black – 7CLD100
Article code	:	Women black/yellow – 7CLD650 Women short black 7CLDS100
This product is a	:	Minor Variant of the basic model : Colorado Trousers - 7CL
Technical file index :	:	01
Last update :	:	May 2022

Manufacturer:

RICHA
Westerring 27, 9700 Oudenaarde
BELGIUM
tel : 0032 55 235326
fax : 0032 55 428110

Factories:

PAK WORLD INDUSTRY
Dheera Sandha, 5km-Main Pasroor Road, Link Cshauni, Sialkot
PAKISTAN

GARMENT DESCRIPTION

General description and intended use:

This product is a Trousers and it is a of the model Colorado Trousers - 7CL.

This garment is a caterogy II PPE.

This garment is designed for motorcycle riders. It offers a minimum necessary degree of protection from impact and abrasion, using materials and construction that meet lower requirements than for parts 2 and 3 of the EN 17092 series. Class A garments are expected to have the least ergonomic and weight penalties.

Visual description of the garment :



Risk assessment (Essential Health and Safety Requirement. Annex II - PPE Regulation)

		Applicable	Covered by
§1	Requirements defined in the Annex II §1 are applicable to all PPE	<input checked="" type="checkbox"/>	<input checked="" type="checkbox"/> Standard <input type="checkbox"/> Instruction for use <input checked="" type="checkbox"/> Marking
§1.4	Manufacturer's instructions and information is available	<input checked="" type="checkbox"/>	<input checked="" type="checkbox"/> Standard <input checked="" type="checkbox"/> Instruction for use <input type="checkbox"/> Marking
§2.1	PPE incorporating adjustments systems	<input checked="" type="checkbox"/>	<input checked="" type="checkbox"/> Standard <input checked="" type="checkbox"/> Instruction for use <input checked="" type="checkbox"/> Marking
§2.2	PPE is designed and manufactured in a way that perspiration resulting from use is minimised. Otherwise it must be equipped with means of absorbing perspiration.	<input checked="" type="checkbox"/>	<input checked="" type="checkbox"/> Standard <input checked="" type="checkbox"/> Instruction for use <input type="checkbox"/> Marking
§2.4	If it is known that the design performance of new PPE may be significantly affected by ageing, the month and year of manufacture and/or, if possible, the month and year of obsolescence must be indelibly and unambiguously marked on each item of PPE placed on the market and on its packaging.	<input checked="" type="checkbox"/>	<input type="checkbox"/> Standard <input checked="" type="checkbox"/> Instruction for use <input checked="" type="checkbox"/> Marking
§2.4	Where appreciable and rapid deterioration in PPE performance is likely to be caused by ageing resulting from the periodic use of a cleaning process recommended by the manufacturer, the latter must, if possible, affix a marking to each item of PPE placed on the market indicating the maximum number of cleaning operations that may be carried out before the equipment needs to be inspected or discarded. Where such a marking is not affixed, the manufacturer must give that information in his instructions	<input checked="" type="checkbox"/>	<input type="checkbox"/> Standard <input checked="" type="checkbox"/> Instruction for use <input checked="" type="checkbox"/> Marking
§2.5	PPE which may be caught up during use	<input checked="" type="checkbox"/>	<input type="checkbox"/> Standard <input checked="" type="checkbox"/> Instruction for use <input type="checkbox"/> Marking
§2.9	PPE incorporating components which can be adjusted or removed by the user	<input checked="" type="checkbox"/>	<input type="checkbox"/> Standard <input checked="" type="checkbox"/> Instruction for use <input type="checkbox"/> Marking
§2.12	PPE bearing one or more identification markings or indicators directly or indirectly relating to health and safety	<input checked="" type="checkbox"/>	<input checked="" type="checkbox"/> Standard <input checked="" type="checkbox"/> Instruction for use <input checked="" type="checkbox"/> Marking
§2.14	Multi-risk PPE	<input checked="" type="checkbox"/>	<input checked="" type="checkbox"/> Standard <input checked="" type="checkbox"/> Instruction for use <input checked="" type="checkbox"/> Marking
§3.1.1	The PPE is intended to protect against impact caused by falling or ejected objects and collisions of parts of the body with an obstacle	<input checked="" type="checkbox"/>	<input checked="" type="checkbox"/> Standard <input checked="" type="checkbox"/> Instruction for use <input checked="" type="checkbox"/> Marking
§3.3	The PPE is intended to protect against mechanical injuries	<input checked="" type="checkbox"/>	<input checked="" type="checkbox"/> Standard <input checked="" type="checkbox"/> Instruction for use <input checked="" type="checkbox"/> Marking
Specific application	Motorcycle garment	<input checked="" type="checkbox"/>	<input checked="" type="checkbox"/> Standard <input checked="" type="checkbox"/> Instruction for use <input checked="" type="checkbox"/> Marking

Garment constitution

	Material reference	Material description	Color	Basis weight or thickness	Present in zone?		
					Z1	Z2	Z3
Outer material	PW-MT#168 - CORDURA NYLON 500D BLACK (02-02-01-020))	100% nylon	Black	212 g/m ²	x	x	x
	PW-MT#76 (POLYESTER CORDURA 600D IMP FLUO YELLOW)	100% polyester	Fluo yellow	254 g/m ²		x	
	PW-MT#183 (TWILL ZEAN COTTON BLACK (02-05-006))	100% cotton	Black	295 g/m ²			x
	PW-MT#78 (NYLON RIPSTOP CORDURA BLACK (02-01-02-002))	100% nylon	Black	399 g/m ²	x	x	
	PW-MT#23 (ANTI SLIP MATERIAL (02-02-15-038))		Black				
	GEN-MT#25 (DESIGNED ELASTIC 2 INCH (04-04-024))		Black				
Lining	PW-MT#22 (MICRO MESH FABRIC (02-02-03-002))	100% polyester	Black	115 g/m ²			
	PW-MT#19 (NYLON TAFFETA 210-T PU BLACK))	100% nylon	Black	84 g/m ²			
Removable lining	PW-MT#28 (QUILT 2" STRAIGHT LINE 190T + WADDING (02-02-16-008))	100% polyester outer	Grey				
Protector pocket	PW-MT#20 (POLYESTER FABRIC 210-T BLACK (02-04-008))	100% polyester	Black	99 g/m ²			
Button	GEN-MT#181 (FRONT SNAP & HOOK)		Metallic				
	GEN-MT#24 (R RUBBER COATED BUTTON (04-01-052))		Black				
	GEN-MT#28 (EYELET #16 GUN METAL (04-01-039))		Metallic				
	GEN-MT#20 (BUTTON ACD BRASS (BACKSIDE OF BUTTON))		Metallic				
Zip	GEN-MT#12 (YBS CONNECTION ZIP #8 (LOWER PART) (03-01-01-049))		Black				
	GEN-MT#45 (SBS NYLON ZIP #5 (03-01-02-002))		Black				
Vent	PW-MT#80 (POLYESTER RASCHEL PD MESH BLACK (02-02-08-001))	100% polyester	Black	326 g/m ²			

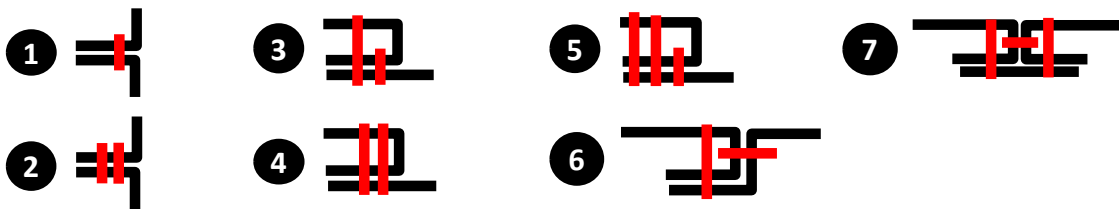
Material combinations

	Material reference	Combination present in zone?		
		Zone 1	Zone 2	Zone 3
Material combination 1	PW-MT#168 - CORDURA NYLON 500D BLACK (02-02-01-020))			
	PW-MT#19 (NYLON TAFFETA 210-T PU BLACK))	x	x	x
	PW-MT#22 (MICRO MESH FABRIC (02-02-03-002))			
Material combination 2	PW-MT#76 (POLYESTER CORDURA 600D IMP FLUO YELLOW			
	PW-MT#19 (NYLON TAFFETA 210-T PU BLACK))		x	x
	PW-MT#22 (MICRO MESH FABRIC (02-02-03-002))			
Material combination 3	PW-MT#183 (TWILL ZEAN COTTON BLACK (02-05-006))			
	PW-MT#19 (NYLON TAFFETA 210-T PU BLACK))		x	x
	PW-MT#22 (MICRO MESH FABRIC (02-02-03-002))			
Material combination 4	PW-MT#78 (NYLON RIPSTOP CORDURA BLACK (02-01-02-002))			
	PW-MT#19 (NYLON TAFFETA 210-T PU BLACK))	x	x	x
	PW-MT#22 (MICRO MESH FABRIC (02-02-03-002))			

Description of the seams

		Reference	Seam type	Zone 1	Zone 2	Zone 3	Protector pocket
Seam 1	Material 1	PW-MT#183 - TWILL ZEAN COTTON BLACK	1			x	
	Material 2	PW-MT#168 - CORDURA NYLON 500D Black					
Seam 2	Material 1	PW-MT#168 - CORDURA NYLON 500D Black	3	x	x	x	
	Material 2	PW-MT#168 - CORDURA NYLON 500D Black					
Seam 3	Material 1	PW-MT#168 - CORDURA NYLON 500D Black	3	x	x		
	Material 2	PW-MT#78 (NYLON RIPSTOP CORDURA BLACK (02-01-02-002))					
Seam 4	Material 1	PW-MT#168 - CORDURA NYLON 500D Black	3		x	x	
	Material 2	PW-MT#23 (ANTI SLIP MATERIAL (02-02-15-038))					
Seam 5	Material 1	PW-MT#168 - CORDURA NYLON 500D Black	3			x	
	Material 2	PW-MT#183 - TWILL ZEAN COTTON BLACK					
Seam 6	Material 1	PW-MT#78 (NYLON RIPSTOP CORDURA BLACK (02-01-02-002))	3	x	x		
	Material 2	PW-MT#168 - CORDURA NYLON 500D Black					
Seam 7	Material 1	PW-MT#23 (ANTI SLIP MATERIAL (02-02-15-038))	3		x		
	Material 2	PW-MT#23 (ANTI SLIP MATERIAL (02-02-15-038))					
Seam 8	Material 1	PW-MT#22 (MICRO MESH FABRIC (02-02-03-002))	1				x
	Material 2	PW-MT#19 (NYLON TAFFETA 210-T PU BLACK))					

(Types of seam)



7CL-COLORADO TROUSER 4034-4038-4039
CUTTING MATERIAL FABRIC DETAILS



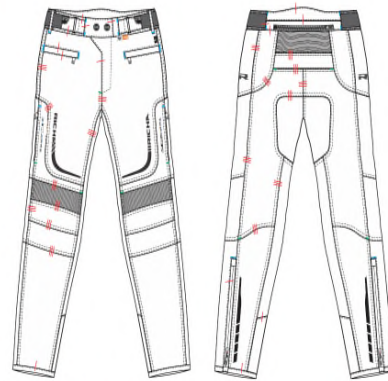
- PW.MT#168 - NYLON CORDURA 500D BLACK
- PW.MT#79 - NYLON RIP-STOP CORDURA BLACK
- PW.MT#193 - TWILL ZEAN COTTON BLACK
- PW.MT#23 - ANTI SLIP MATERIAL (02-02-15-038)
- GEN.MT#19 - VELCRO (HOOK & LOOP) 1.5 INCH

1,2,3,4,5,6,

12,15,16,17,18,19,20,21,22,23

11

7CL-COLORADO TROUSER 4034-4038-4039
STITCHING

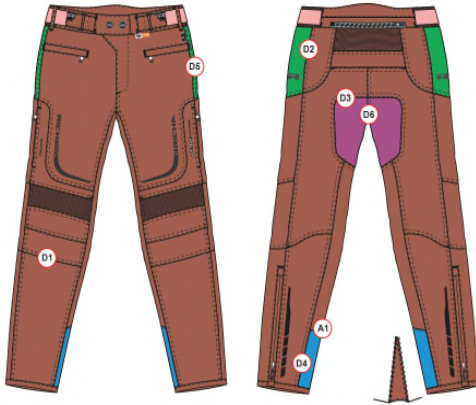


- 2mm From Edge
- Contrast Thread Bartek
- 2mm+6mm From Edge
- Matching Thread Bartek

design and development by:



7CL-COLORADO TROUSER 4034-4038-4039
SEAM DETAIL



- A** = 2mm From Edge
- D** = 2mm+6mm From Edge

PROTECTION SCOPE

This garment meets the essential health and safety requirements of the Personal Protective Equipment Regulation (UE) 2016/425.

It is a category II product.

This garment is designed for motorcycle riders. It offers a minimum necessary degree of protection from impact and abrasion, using materials and construction that meet lower requirements than for parts 2 and 3 of the EN 17092 series. Class A garments are expected to have the least ergonomic and weight penalties.

GENERAL REQUIREMENTS

Range of size

Size	XS	S	M	L	XL	2XL	3XL	4XL
Heigh (cm)	152 - 158	154 - 160	158 - 164	162 - 168	166 - 172	169 - 175	172 - 178	174 - 180
Waist girth (cm)	70 - 74	74 - 78	78 - 82	82 - 86	86 - 90	90 - 94	94 - 98	98 - 102

Size	5XL	6XL
Heigh (cm)	176 - 182	178 - 184
Waist girth (cm)	102 - 106	106 - 110

SPECIFIC REQUIREMENTS AND PERFORMANCE LEVELS

Standard EN 17092-4:2020

		Zone 1	Zone 2	Zone 3	
Dimensional stability of the garment (N/A if no cleaning required)	%	± 5			
Impact protector location and fixation	over the correct location on the body, secured within the pockets and secured in their position.				
External impact protector location and fixation	pocket shall meet the requirements of the appropriate zone. Protector shall not be released				
Impact abrasion	Darmstadt / no hole on the 9 test pieces	rpm	265	147	n/a
Seam strength	by zone	N/mm	≥6	≥6	≥4
	protector pocket	N/mm	≥4		
Seam construction	general	-	at least one line protected		
	leather or textile abrasion overlays	-	at least 2 rows of stitching		
	hard shell overlays	-	at least 2 rows of stitching		
Tear strength	by zone	N	≥35	≥25	≥25
	protector pocket	N	≥10		
Restraint	Two pieces suits	no gap and no opening			
	sleeve	no extraction of the cone			
	Thumb loops distance A-B	mm	max 140		
Innocuousness	EN ISO 13688:2013 § 4.2 + REACH	pH, Cr VI (leather), Ni (metal in contact with skin), Azo dyes (if contact with skin), Tin, Cadmium (coated material), PAH (plastic in contact with skin), phtalates (polymers in contact with skin)			
Structural closure	same test as seams	N/mm	≥6	≥6	≥4
Vents	protected by same SSL or by SSL zone 3 if opening limited to 4cm at 90° of the length				
Pockets	protected by same SSL extended along the interior of the pocket beyond the opening at least an additional 3 cm				
Fit and ergonomics	EN 17092-1, 5.5 : all answers positive				

TEST REPORTS

1	Satra 2777/10609-01/E00-00
2	Satra 2777/10608-02/E00-00
3	Satra 2777/13054-03/E00-00
4	Satra 2777/10815-01/E00-00
5	Satra 2777/11251-01/E00-00
6	L210917523_1
7	L210611846_1

8	L211019229_1
9	L220304218_1
10	L210508209_1
11	L210305452-1
12	MT18030201
13	MT21010124
14	L210611850_1

15	L211018803_1
16	L220304220_1
17	L210917986_1
18	L210612071_1
19	
20	
21	

		Reports
4.1 - General		
4.1.1 Innocuousness and REACh - Annex XVII		6+7+8+9+10+11+12+13
4.1.3 Dimensional stability of garments	Washing Température : Number of washing cycles :	16
4.2 - Impact Energy Absorption		
4.2.1 General		1+2+3+4+5+16
4.2.2 Impact protector location and fixation		1+2+3+4+5+16
4.3 Impact abrasion resistance		14+16
4.4 - Structurally Strong Seams (SSS)		
4.4.1 - General		16
4.4.2 Seam strength		14+16+17
4.5 - Tear strength		
4.5 Tear strength		14+15+18
4.6- Restraint		
4.6.1 - General		n.a
4.6.2 Two-piece suit requirements for joint between the upper and the lower part		n.a
4.6.3 Garment sleeve restraint		n.a
4.7- Additional garment construction requirements		
4.7.2 - Structural closures		16
4.7.3 - Vents		16
4.7.4 - Pockets		16
4.7.5 - Zone intrusions		n.a
4.7.7 - Use of open mesh materials		n.a
4.7.8 - Use of retroreflective materials (optional)	Performance of the retroreflective materials shall be in conformity with Clause 6 of EN 1150:1999. This requirement does not apply to reflective elements included for reasons of design or decoration.	n.a
4.8 Fit and ergonomics		16

MARKING - PACKAGING

Marking of the garment:

Logo of Manufacturer

Address of Manufacturer

Logo



Product reference:

Colorado Trousers women

Women black – 7CLD100

Article Code:

Women black/yellow – 7CLD650

Women short black 7CLDS100

Size indicator

Pictograms

Indication of the protection Class A

Date of Manufacture (month/year) and/or serial/batch number

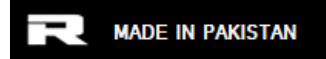
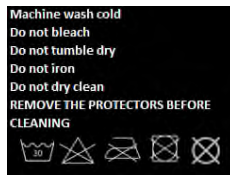
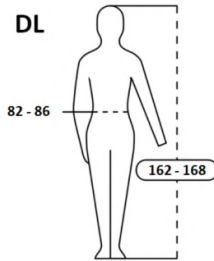
Date of obsolescence (month/year) if applicable

Location of the marking: Inner labels

Garment marking example:



MATERIAL COMPOSITION
OUTSHELL:
 80% nylon
 10% cotton
 10% polyester
LINING:
 80% polyester
 20% nylon
REMOVABLE LINING:
 100% polyester



MODEL COLORADO TROUSERS WOMEN	RICHA NV
ARTNR 7CLD650 - BLACK / YELLOW	INSPEK
ORDER NR SIZE	
01-PW-25-22 L	

MODEL COLORADO TROUSERS WOMEN	RICHA NV
ARTNR 7CLD100 - BLACK	INSPEK
ORDER NR SIZE	
01-PW-25-22 L	

MODEL COLORADO TROUSERS WOMEN	RICHA NV
ARTNR 7CLDS100 - SHORT BLACK	INSPEK
ORDER NR SIZE	
01-PW-25-22 L	

Method of marking of the garment:

Labels

PPE subject to ageing :

Peremption period: 5 years when stored in appropriate conditions (humidity, temperature, clean , ventilated, light). Before use, the garment shall be visually controlled. In case of deterioration the garment must be scrapped (abrasion, cut, tear, ...).

Cleaning instructions:

Number of cleaning cycles:	5
Care Instructions:	Remove the protectors before washing Machine wash Do not bleach Do not tumble dry Do not dry clean Do not iron

MEANS OF CONTROL

1. Research and development
 2. Sourcing
 3. Purchasing
 4. Documentation and traceability
 5. Receipt of raw materials / Control of supplies
 - Testing of raw materials in laboratory: pH & Azoïcs test with every new shipment
 6. Quality control during glove manufacturing
 7. Quality control of finished gloves
 8. Quality control packaging & labels
 9. Quality control finished shipment
 10. Quality control necessary documents
 11. Receipt and inspection of documents and gloves at headquarters
 12. Written evaluation finished order
- See ISO 9001 certificate
Also ISO 14001 and ISO 45001 available

DNV·GL

MANAGEMENT SYSTEM CERTIFICATE

Certificate No: 202793-2016-AQ-BEL-RvA Initial certification date: 22 August 2016 Valid: 22 August 2019 - 21 August 2022

This is to certify that the management system of

Richa
Westerring 27, 9700 Oudenaarde, Belgium

has been found to conform to the Quality Management System standard:
ISO 9001:2015

This certificate is valid for the following scope:
The design, distribution, customization and post-delivery activities of motorcycle clothing and accessories.

Place and date:
Barendrecht, 07 November 2019

For the issuing office:
DNV GL - Business Assurance
Zwolsloweg 1, 2994 LB, Barendrecht, Netherlands

J.H.G.M. van Gijzen
Management Representative

The RvA is a signatory to the IAF MLA

Lack of fulfillment of conditions as set out in the Certification Agreement may render this Certificate invalid.
ACCREDITED UNIT: DNV GL Business Assurance B.V., Zwolsloweg 1, 2994 LB, Barendrecht, Netherlands, TEL: +31 102922689, www.dnvgl.com/assurance

BUREAU VERITAS
Certification

PAK WORLD INDUSTRY
DHEERA SANDHA, 5-KM MAIN PASRUR ROAD, LINK CSHAUNI SULEHRIAN ROAD,
SIALKOT-PAKISTAN

Bureau Veritas Certification Holding SAS -UK Branch certifies that the Management System of the above organisation has been audited and found to be in accordance with the requirements of the management system standards detailed below

ISO 9001:2015

Manufacturing & Export of Yarn, Grey Fabric, Denim Fabric and Garments (Woven Bottom)

Original cycle start date:	16 th April 2020
Expiry date of previous cycle:	N/A
Certification /Recertification Audit date:	30 th March 2020
Certification/ Recertification cycle start date:	16 th April 2020

Subject to the continued satisfactory operation of the organization's Management System, this certificate expires on: **15th April 2023**

Certificate No. MER20.311/A/Q Version: 01 Revision date: 16th April 2020

Signed on behalf of BVCH SAS UK Branch

Certification body address: 5th Floor, 66 Pressed Street, London E1 6HG, United Kingdom
Bureau Veritas Pakistan (Private) Ltd. Office No. 06, Third Floor, Sankar Square Plaza,
Blue Area, Islamabad, Pakistan
Further clarifications regarding the scope of this certificate and the applicability of the management system requirements may be obtained by consulting the organisation.
To check this certificate validity please call: +91201 244276-6276