



EU-TYPE EXAMINATION CERTIFICATE



The following model of Personal Protective Equipment has been subjected to an EU-type examination in accordance with the module B of the PPE regulation (2016/425) and has been shown to satisfy to essential health and safety requirements.

Certificate N° 0075/1744/162/01/22/0091

Issued by CTC, Notified Body N°0075, to the following model of personal protective equipment :

Manufacturer : RICHA
Westerring 27, 9700 Oudenaarde
BELGIUM

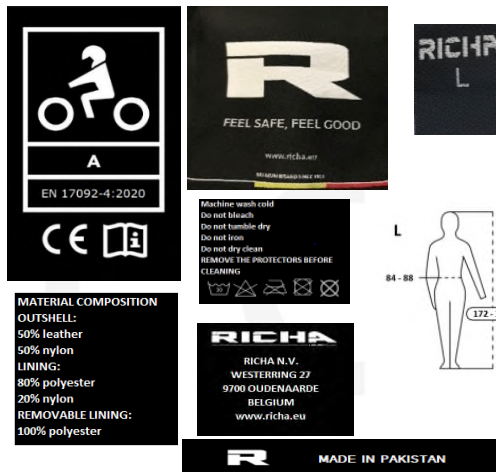
Description

PPE Type : Protective garments for motorcycle riders: class of protection A

Product reference : Camargue Evo Trousers

Article code : Black – 7CE100
Black/yellow – 7CE650
Long black – 7CEL100
Short black – 7CES100
Available sizes : S to 6XL

Pictures :



MODEL CAMARGUE EVO TROUSERS LONG - BLACK ARTNR 7CEL100 ORDER NR SIZE 01-PW-25-22 L	RICHA NV INSPEK
MODEL CAMARGUE EVO TROUSERS BLACK / YELLOW ARTNR 7CE650 ORDER NR SIZE 01-PW-36-21 L	RICHA NV INSPEK
MODEL CAMARGUE EVO TROUSERS - BLACK ARTNR 7CE100 ORDER NR SIZE 01-PW-25-22 L	RICHA NV INSPEK
MODEL CAMARGUE EVO TROUSERS SHORT - BLACK ARTNR 7CES100 ORDER NR SIZE 01-PW-25-22 L	RICHA NV INSPEK

Reference standard :

Levels of performance / class of protection

EN ISO 13688:2013

-

EN 17092-4:2020

CLASS A GARMENT

At the date of the certificate, the product is in compliance with Annex XVII of REACH regulation (n° 1907/2006 and revisions)

Full description of the PPE, reference rules verified in the context of the EU-type examination and information given on the product are detailed in the manufacturer's technical file index 01 dated from January 2022 and the user notice v02/2021

NOTA : Any modification to new items of the personal protective equipment object of this EU type approval certificate or any modification of the information contained in the manufacturer technical file which served for the deliverance of the EU type approval certificate (change of address, change of company status) should be brought to the attention of the notified body in accordance with Annex V §7.2 of Regulation 2016/425. Any marking on the PPE which is not concerned by the Regulation (UE) 2016/425, is not covered by this certificate.

Issued in Lyon by
Didier GUISSADO
Certification and Quality Manager

Date of first issue : 27 January 2022
End of validity date : 27 January 2027

In application of the Regulation 2016/425 of the European parliament and the Council of 9th March 2016 related to Personal Protective Equipment and repealing the Directive 89/686/EEC.



Accreditation n° 5-0594
Scope available on:
www.cofrac.fr



www.ctcgroupe.com

cemarking@ctcgroupe.com

CTC - 4, rue Hermann Frenkel - 69367 Lyon cedex 07 - France
(0)4 72 76 10 10 - Fax: +33 (0)4 72 76 10 00 - ctclyon@ctcgroupe.com

Comité Professionnel de Développement Économique (CPDE) Cuir: Chaussure Maroquinerie Ganterie
Loi 78-654 du 22.06.1978 - Siret 77564972600160 - Code NAF 9412Z - TVA FR 88775649726



RICHA

MANUFACTURER'S TECHNICAL FILE TO THE PPE REGULATION
2016/425

Reference of the product	:	Camargue Evo Trousers
Article code	:	Black – 7CE100 Black/yellow – 7CE650 Long black – 7CEL100
Technical file index	:	01
Last update	:	January 2022

IDENTIFICATION

Reference of the product	:	Camargue Evo Trousers Black – 7CE100
Article code	:	Black/yellow – 7CE650 Long black – 7CEL100 Short black – 7CES100
This product is a basic model.		
Technical file index :	:	01
Last update :	:	January 2022

Manufacturer:

RICHA
Westerring 27, 9700 Oudenaarde
BELGIUM
tel : 0032 55 235326
fax : 0032 55 428110

Factories:

PAK WORLD INDUSTRY
Dheera Sandha, 5km-Main Pasroor Road, Link Cshauni, Sialkot
PAKISTAN

GARMENT DESCRIPTION

General description and intended use:

This product is a trousers and it is a basic model.

This garment is a category II PPE.

This garment is designed for motorcycle riders. It offers a minimum necessary degree of protection from impact and abrasion, using materials and construction that meet lower requirements than for parts 2 and 3 of the EN 17092 series. Class A garments are expected to have the least ergonomic and weight penalties.

Visual description of the garment :



Risk assessment (Essential Health and Safety Requirement. Annex II - PPE Regulation)

		Applicable	Covered by
§1	Requirements defined in the Annex II §1 are applicable to all PPE	<input checked="" type="checkbox"/>	<input checked="" type="checkbox"/> Standard <input type="checkbox"/> Instruction for use <input checked="" type="checkbox"/> Marking
§1.4	Manufacturer's instructions and information is available	<input checked="" type="checkbox"/>	<input checked="" type="checkbox"/> Standard <input checked="" type="checkbox"/> Instruction for use <input type="checkbox"/> Marking
§2.1	PPE incorporating adjustments systems	<input checked="" type="checkbox"/>	<input checked="" type="checkbox"/> Standard <input checked="" type="checkbox"/> Instruction for use <input checked="" type="checkbox"/> Marking
§2.2	PPE is designed and manufactured in a way that perspiration resulting from use is minimised. Otherwise it must be equipped with means of absorbing perspiration.	<input checked="" type="checkbox"/>	<input checked="" type="checkbox"/> Standard <input checked="" type="checkbox"/> Instruction for use <input type="checkbox"/> Marking
§2.4	If it is known that the design performance of new PPE may be significantly affected by ageing, the month and year of manufacture and/or, if possible, the month and year of obsolescence must be indelibly and unambiguously marked on each item of PPE placed on the market and on its packaging.	<input checked="" type="checkbox"/>	<input type="checkbox"/> Standard <input checked="" type="checkbox"/> Instruction for use <input checked="" type="checkbox"/> Marking
§2.4	Where appreciable and rapid deterioration in PPE performance is likely to be caused by ageing resulting from the periodic use of a cleaning process recommended by the manufacturer, the latter must, if possible, affix a marking to each item of PPE placed on the market indicating the maximum number of cleaning operations that may be carried out before the equipment needs to be inspected or discarded. Where such a marking is not affixed, the manufacturer must give that information in his instructions	<input checked="" type="checkbox"/>	<input type="checkbox"/> Standard <input checked="" type="checkbox"/> Instruction for use <input checked="" type="checkbox"/> Marking
§2.5	PPE which may be caught up during use	<input checked="" type="checkbox"/>	<input type="checkbox"/> Standard <input checked="" type="checkbox"/> Instruction for use <input type="checkbox"/> Marking
§2.9	PPE incorporating components which can be adjusted or removed by the user	<input checked="" type="checkbox"/>	<input type="checkbox"/> Standard <input checked="" type="checkbox"/> Instruction for use <input type="checkbox"/> Marking
§2.12	PPE bearing one or more identification markings or indicators directly or indirectly relating to health and safety	<input checked="" type="checkbox"/>	<input checked="" type="checkbox"/> Standard <input checked="" type="checkbox"/> Instruction for use <input checked="" type="checkbox"/> Marking
§2.14	Multi-risk PPE	<input checked="" type="checkbox"/>	<input checked="" type="checkbox"/> Standard <input checked="" type="checkbox"/> Instruction for use <input checked="" type="checkbox"/> Marking
§3.1.1	The PPE is intended to protect against impact caused by falling or ejected objects and collisions of parts of the body with an obstacle	<input checked="" type="checkbox"/>	<input checked="" type="checkbox"/> Standard <input checked="" type="checkbox"/> Instruction for use <input checked="" type="checkbox"/> Marking
§3.3	The PPE is intended to protect against mechanical injuries	<input checked="" type="checkbox"/>	<input checked="" type="checkbox"/> Standard <input checked="" type="checkbox"/> Instruction for use <input checked="" type="checkbox"/> Marking
Specific application	Motorcycle garment	<input checked="" type="checkbox"/>	<input checked="" type="checkbox"/> Standard <input checked="" type="checkbox"/> Instruction for use <input checked="" type="checkbox"/> Marking

Garment constitution

	Material reference	Material description	Color	Basis weight or thickness	Present in zone?		
					Z1	Z2	Z3
Outer material	PW-MT#168 (CORDURA NYLON 500D BLACK (02-02-01-020))	100% nylon	Black	212 g/m ²	x	x	x
	PW-MT#23 (ANTI SLIP MATERIAL (REGMAR GRIPY FABRIC (0,8 - 0,9mm GAUGE) (02-02-15-038))		Black			x	
	PW-MT#16 (POLYESTER CORDURA 600 D BLACK IMP (02-01-003))	100% polyester	Black	218 g/m ²		x	x
	PW-MT#76 (POLYESTER CORDURA 600 D IMP (02-01-023))	100% polyester	Yellow	218 g/m ²		x	x
	PW-MT#78 (NYLON RIPSTOP CORDURA BLACK (02-01-02-002))	100% nylon	Black	399 g/m ²	x	x	
Lining	PW-MT#22 (MICRO MESH FABRIC (02-02-03-002))	100% polyester	Black	115 g/m ²			
	PW-MT#19 (NYLON TAFFETA 210-T PU BLACK))	100% nylon	Black	84 g/m ²			
	PW-MT#80 (POLYESTER RASCHEL PD MESH (02-02-02-001))	100% polyester	Black				
Removable lining	PW-MT#28 (QUILT 2" STRAIGHT LINE 190T + WADDING (02-02-16-008))	100% polyester outer	Grey				
Protector pocket	PW-MT#20 (POLYESTER FABRIC 210-T BLACK (02-04-008))	100% polyester	Black	99 g/m ²			
Button	GEN-MT#23 (BUTTON HOOK (PART A + PART B) (04-023))		Metallic				
	GEN-MT#24 (R RUBBER COATED BUTTON (04-01-052))		Black				
	GEN-MT#20 (BUTTON ACD BRASS (BACKSIDE OF BUTTON) (04-01-004))		Metallic				
Zip	GEN-MT#12 (YBS CONNECTION ZIP #8 (LOWER PART) (03-01-01-049))		Black				
	GEN-MT#45 (SBS NYLON ZIP #5 (03-01-02-002))		Black				

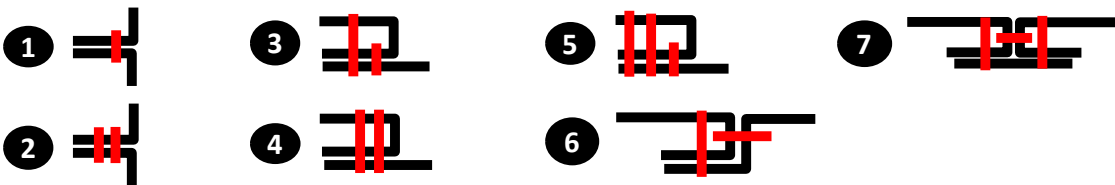
Material combinations

	Material reference	Combination present in zone?		
		Zone 1	Zone 2	Zone 3
Material combination 1	PW-MT#168 (CORDURA NYLON 500D BLACK (02-02-01-020))	x	x	x
	PW-MT#22 (MICRO MESH FABRIC (02-02-03-002))			
Material combination 2	PW-MT#16 (POLYESTER CORDURA 600 D BLACK IMP (02-01-003))	x	x	x
	PW-MT#22 (MICRO MESH FABRIC (02-02-03-002))			
Material combination 3	PW-MT#78 (NYLON RIPSTOP CORDURA BLACK (02-01-02-002))	x	x	x
	PW-MT#22 (MICRO MESH FABRIC (02-02-03-002))			

Description of the seams

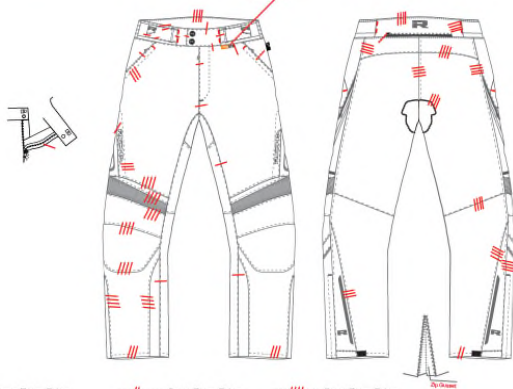
		Reference	Seam type	Zone 1	Zone 2	Zone 3	Protector pocket
Seam 1	Material 1	PW-MT#168 (CORDURA NYLON 500D BLACK (02-02-01-020))	1		x	x	
	Material 2	PW-MT#168 (CORDURA NYLON 500D BLACK (02-02-01-020))					
Seam 2	Material 1	PW-MT#168 (CORDURA NYLON 500D BLACK (02-02-01-020))	1		x	x	
	Material 2	PW-MT#16 (POLYESTER CORDURA 600 D BLACK IMP (02-01-003))					
Seam 3	Material 1	PW-MT#168 (CORDURA NYLON 500D BLACK (02-02-01-020))	1	x	x	x	
	Material 2	PW-MT#78 (NYLON RIPSTOP CORDURA BLACK (02-01-02-002))					
Seam 4	Material 1	PW-MT#168 (CORDURA NYLON 500D BLACK (02-02-01-020))	1		x	x	
	Material 2	PW-MT#168 (CORDURA NYLON 500D BLACK (02-02-01-020))					
Seam 5	Material 1	PW-MT#168 (CORDURA NYLON 500D BLACK (02-02-01-020))	1	x	x	x	
	Material 2	PW-MT#16 (POLYESTER CORDURA 600 D BLACK IMP (02-01-003))					
Seam 6	Material 1	PW-MT#16 (POLYESTER CORDURA 600 D BLACK IMP (02-01-003))	1	x	x	x	
	Material 2	PW-MT#168 (CORDURA NYLON 500D BLACK (02-02-01-020))					
Seam 7	Material 1	PW-MT#168 (CORDURA NYLON 500D BLACK (02-02-01-020))	1	x	x	x	
	Material 2	PW-MT#78 (NYLON RIPSTOP CORDURA BLACK (02-01-02-002))					
Seam 8	Material 1	PW-MT#78 (NYLON RIPSTOP CORDURA BLACK (02-01-02-002))	1	x	x	x	
	Material 2	PW-MT#168 (CORDURA NYLON 500D BLACK (02-02-01-020))					
Seam 11	Material 1	POLYESTER FABRIC 210-T BLACK PW-MT#20	1				x
	Material 2	PW-MT#22 (MICRO MESH FABRIC					

(Types of seam)



CAMARGUE EVO TROUSER 4178 - 4204 - 4205
FOR STITCHING

AQUA
DRELL

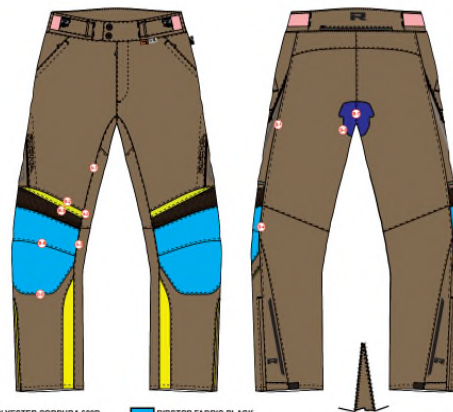


- 2mm From Edge
- 6mm From Edge
- 5mm From Edge
- 2cm From Edge
- Thread Bartek
- MATCHING BARTEK

design and development by



CAMARGUE EVO TROUSER 4178 - 4204 - 4205



- Nylon Cordura
- POLYESTER CORDURA 600D
- RIBSTOP FABRIC BLACK
- BLACK VELCRO
- ANTI SLIP FABRIC

1,2,3,4,5,6,



12,15,16,17,18,19,20,21,22,23



11



*f the differ
ot, hide th*

PROTECTION SCOPE

This garment meets the essential health and safety requirements of the Personal Protective Equipment Regulation (UE) 2016/425.

It is a category II product.

This garment is designed for motorcycle riders. It offers a minimum necessary degree of protection from impact and abrasion, using materials and construction that meet lower requirements than for parts 2 and 3 of the EN 17092 series. Class A garments are expected to have the least ergonomic and weight penalties.

GENERAL REQUIREMENTS

Range of size

Size	S	M	L	XL	2XL	3XL	4XL	5XL
Height (cm)	166 - 172	169 - 175	172 - 178	175 - 181	178 - 184	181 - 187	184 - 190	185 - 191
Waist girth (cm)	69 - 75	75 - 81	81 - 87	87 - 93	93 - 99	99 - 105	105 - 111	111 - 117

Size	6XL	
Height (cm)	186 - 192	
Waist girth (cm)	117 - 123	

SPECIFIC REQUIREMENTS AND PERFORMANCE LEVELS

Standard EN 17092-4:2020

			Zone 1	Zone 2	Zone 3
Dimensional stability of the garment (N/A if no cleaning required)		%	± 5		
Impact protector location and fixation	over the correct location on the body, secured within the pockets and secured in their position.				
External impact protector location and fixation	pocket shall meet the requirements of the appropriate zone. Protector shall not be released				
Impact abrasion	Darmstadt / no hole on the 9 test pieces	rpm	265	147	n/a
Seam strength	by zone	N/mm	≥6	≥6	≥4
	protector pocket	N/mm	≥4		
Seam construction	general	-	at least one line protected		
	leather or textile abrasion overlays	-	at least 2 rows of stitching		
	hard shell overlays	-	at least 2 rows of stitching		
Tear strength	by zone	N	≥35	≥25	≥25
	protector pocket	N	≥10		
Restraint	Two pieces suits	no gap and no opening			
	sleeve	no extraction of the cone			
	Thumb loops distance A-B	mm	max 140		
Innocuousness	EN ISO 13688:2013 § 4.2 + REACh	pH, Cr VI (leather), Ni (metal in contact with skin), Azo dyes (if contact with skin), Tin, Cadmium (coated material), PAH (plastic in contact with skin), phtalates (polymers in contact with skin)			
Structural closure	same test as seams	N/mm	≥6	≥6	≥4
Vents	protected by same SSL or by SSL zone 3 if opening limited to 4cm at 90° of the length				
Pockets	protected by same SSL extended along the interior of the pocket beyond the opening at least an additional 3 cm				
Fit and ergonomics	EN 17092-1, 5.5 : all answers positive				

TEST REPORTS

1 Satra 2777/13054-03/E00-00	8 L210305296_1	15 L210713479_1
2 Satra 2777/11251-01/E00-00	9 L210917986_1	16 L220100193_1
3 Satra 2777/10815-01/E00-00	10 MT18030201 IDIADA	17
4 Satra 2777/10609-01/E00-00	11 4041207/E RICOTEST	18
5 Satra 2777/10608-02/E00-00	12 MT21010124 IDIADA	19
6 Satra 2777/10804-01/E00-00	13 MT17120100 IDIADA	20
7 L210611850_1	14 L210611846_1	21

		Reports
4.1 - General		
4.1.1 Innocuousness and RECh - Annex XVII		10+11+12+13+14+15+16
4.1.3 Dimensional stability of garments	Washing Température : Number of washing cycles :	7
4.2 - Impact Energy Absorption		
4.2.1 General		1+2+3+4+5+6+7
4.2.2 Impact protector location and fixation		1+2+3+4+5+6+7
4.3 Impact abrasion resistance		7
4.4 - Structurally Strong Seams (SSS)		
4.4.1 - General		7
4.4.2 Seam strength		7+9
4.5 - Tear strength		
4.5 Tear strength		7+8
4.6- Restraint		
4.6.1 - General		n.a
4.6.2 Two-piece suit requirements for joint between the upper and the lower part		7
4.6.3 Garment sleeve restraint		n.a
4.7- Additional garment construction requirements		
4.7.2 - Structural closures		7
4.7.3 - Vents		7
4.7.4 - Pockets		7
4.7.5 - Zone intrusions		n.a
4.7.7 - Use of open mesh materials		n.a
4.7.8 - Use of retroreflective materials (optional)	Performance of the retroreflective materials shall be in conformity with Clause 6 of EN 1150:1999. This requirement does not apply to reflective elements included for reasons of design or decoration.	n.a
4.8 Fit and ergonomics		7

MARKING - PACKAGING






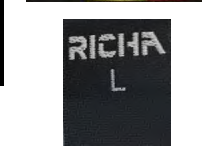
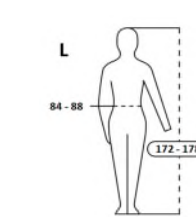
Marking of the garment:

Logo of Manufacturer
 Address of Manufacturer
 Logo
 Product reference: Camargue Evo Trousers
 Black – 7CE100
 Article Code: Black/yellow – 7CE650
 Long black – 7CEL100

Size indicator
 Pictograms
 Indication of the protection Class A
 Date of Manufacture (month/year) and/or serial/batch number
 Date of obsolescence (month/year) if applicable

Location of the marking: Labels inside the garments

Garment marking example:

			<p>Machine wash cold Do not bleach Do not tumble dry Do not iron Do not dry clean REMOVE THE PROTECTORS BEFORE CLEANING</p> 	<p>MODEL CAMARGUE EVO TROUSERS LONG - BLACK ARTNR 7CE100 ORDER NR SIZE 01-PW-25-22 L</p>	<p>RICHA NV INSPEK</p>
			<p>MATERIAL COMPOSITION OUTSHELL: 50% leather 50% nylon LINING: 80% polyester 20% nylon REMOVABLE LINING: 100% polyester</p>	<p>MODEL CAMARGUE EVO TROUSERS - BLACK ARTNR 7CE100 ORDER NR SIZE 01-PW-25-22 L</p>	<p>RICHA NV INSPEK</p>
				<p>MODEL CAMARGUE EVO TROUSERS SHORT - BLACK ARTNR 7CES100 ORDER NR SIZE 01-PW-25-22 L</p>	<p>RICHA NV INSPEK</p>
				<p>MODEL CAMARGUE EVO TROUSERS BLACK / YELLOW ARTNR 7CE650 ORDER NR SIZE 01-PW-36-21 L</p>	<p>RICHA NV INSPEK</p>

Method of marking of the garment:

Labels

PPE subject to ageing :

Peremption period: 5 years when stored in appropriate conditions (humidity, temperature, clean , ventilated, light). Before use, the garment shall be visually controlled. In case of deterioration the garment must be scrapped (abrasion, cut, tear, ...).

Cleaning instructions:

Number of cleaning cycles:	5
Care Instructions:	<p>Remove protectors before cleaning Machine wash at 30°C Do not bleach Do not tumble dry Do not iron</p>

MEANS OF CONTROL

1. Research and development
2. Sourcing
3. Purchasing
4. Documentation and traceability
5. Receipt of raw materials / Control of supplies
- Testing of raw materials in laboratory: pH & Azoics test with every new shipment
6. Quality control during glove manufacturing
7. Quality control of finished gloves
8. Quality control packaging & labels
9. Quality control finished shipment
10. Quality control necessary documents
11. Receipt and inspection of documents and gloves at headquarters
12. Written evaluation finished order

